

THE COMMUNITY NEWS

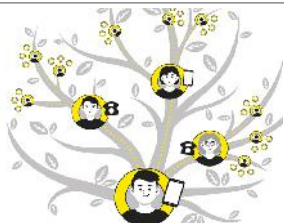
From Cefn Mawr, Acrefair, Plas Madoc, Dee Valley and District
Covid-19 Bulletin 2, April 19 2020



Key Workers children at **Ysgol Cefn Mawr** have drawn and coloured in a beautiful heart they wanted to share with us all. Thank you Ysgol Cefn Mawr.



Local Acrefair based **Acrefair Pizza and Kebab** were happy to support our NHS by donating some of their freshly made pizzas and kebabs to staff at the Maelor Hospital last week [#thankyounhs](#)



"No one can do everything, but everyone can do something!" Supporting our neighbours and wider community

who are not connected on social media can be a challenge. Why not setup a phone tree in your area? It's a lovely way to stay connected, particularly with those who are not online. Here is how it works... You call 3 people. Those 3 call 3 people each making 9. Those 9 each call 3 people reaching 27 people. Those 27 each call 3 reaching 81 people. The phone tree builds. Call 3 people today to ask how they are doing. Reduce isolation and stay connected.

[#CommunityActionResponse](#) [#LookAfterEachOther](#)

FACE SHIELD APPEAL

Peter N Harling Dtg of Chirk based **K2 Ceramic Studios** has been busy printing face shields for local key workers, he has set up a just giving page to help fund more 3D resin so they can carry on helping protect these incredible people. If you could donate just £1 I would be very grateful. Please go to: <https://www.justgiving.com/crowdfunding/peter-harling-1?>



They have produced head straps for the Chirk District Nurses to hold their masks in place, stopping nurses ears getting cut during crazy long shifts and, they also stop them from touching their faces to adjust them. Peter said "We are doing our best to get as many out to people as possible and thank you to our amazing Key Workers for all they do".



ACR ROOFING Services

Why Choose Us?

Est 2006 • Family Business • Professional & Personal Testimonials Upon Request

New Roofs • Re-Roofs • Slating • Tiling
Flat Roofs • Re-Pointing • Leadwork
PCV-U Fascia • Guttering
All Chimney Repairs • All Roof Joinery
Rubber Roofing • Fibre Glass Roofing

- Insurance Work Undertaken
- 24 Hour Emergency Call Out

Call NOW on 01691 770097 or 07903 879726
Or visit: www.acroofingservices.co.uk

CEFN LIBRARY UPDATE

Firstly, If any of our customers are reading this, on behalf of myself and Deryl, I would just like to say we are thinking of you and hope everyone is staying safe - we will see you very soon xx

News so far

All of Wrexham Libraries are still currently closed until further notice. All books that are currently on loan will be automatically renewed and you won't be fined for these books.

Remember, you can still access your library 24 hours from the comfort of your armchair, you can have access to thousands of e-books, e-audio books, e-magazines and e-comics. All you need is your library card number and your PIN number. Check it out at www.wrexham.gov.uk/library and follow the online services link.

If you don't have your PIN and would like to request it please email library@wrexham.gov.uk stating your name, address, postcode and Library Card Number.

For those of you who don't currently have a library card and wish to use this service, we have made it possible for you to create a **Temporary Online Membership** which will give you access to all of our online e-books free of charge. Go to www.wrexham.gov.uk/libraries and select **Online Services** then select **Online Catalogue** and **Join the Library**.

We are looking forwards to welcoming our readers and our lovely groups back when it is safe to do so. Keep Reading, keep Crocheting and keep Knitting and Nattering!



DO YOU MISS YOUR LOCAL LIBRARY?

Library staff throughout Wrexham are missing our customers and we were wondering if you're missing the library? If you're under 16 let us know if you are by drawing a picture of your local library or favourite library staff member, then ask a grown up to take a photo of it and email it to us at library@wrexham.gov.uk and we will put your pictures on our social media channels – Facebook, Twitter and Instagram.

SUPPORTING FAMILIES DURING COVID-19

Encourage Open Conversation

You may not feel like you have answers, but it's important to encourage children to ask questions. Here's how:

- ▶ Model calm behavior while providing information in a developmentally appropriate way
- ▶ Provide reassurance, empathy and encouragement in the face of uncertainty
- ▶ For example: "I know things are different, but we will get through it together"



childmind.org/coronavirus



YSGOL RHOSYMEDRE UPDATE

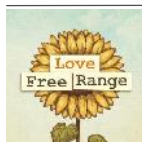
A heartfelt thank you to all of the people in the local community who continue to provide the vital key services for us all. Thank you also to the wonderful staff at Rhosymedre for their continued positivity, commitment and dedication during this challenging time. The staff send their love until we can all be together again.

School is still closed at the moment for all children, apart from those with critical worker parents. It has been lovely to see those few children each day. We miss you all so much and we are looking forward to when our school reopens so that we can see all of your beautiful smiling faces again. Keep following the Government guidance with social distancing and reasons for travel and stay safe and well.

Don't forget that class teachers will be updating the activities on the school website from **Monday 20th April**. <https://rhosymedre-community-primary-school.j2webby.com/>

The children can also log on to HWB to access a range of fun and interesting resources and activities.

Take special care of yourselves everyone and we will hopefully see you soon.



HOME FARM OVERTON

Offering home delivery to the following postcodes on selected days **LL11, LL12, LL13, LL14, LL20, SY11, SY12, SY13**, if your postcode isn't here do contact us to see how we can help. As well as our usual produce: sausages, bacon, eggs, meat, pies, sausage rolls, cooked meats etc we also offer daily staples such as milk, cheese, bread, potatoes and other vegetables and salad where available. We will get other essentials if you are desperate please ask, if we can we will! Self isolating? We can deliver to a safe place. We have a portable card machine for payment or you could simply place your order with us and we can send you our PayPal details! Please call us on **01978 710141**. Replies may be a little delayed on our **Facebook** page but we will reply as soon as we can! Thank you.



Dragon Dinners
Hot Meals on Wheels

DRAGON DINNERS

Delivering Hot, Home Cooked Meals to over 55's, Carers and anyone unable to make a meal. Hot Dinner + Hot Pudding £5.65. No delivery charge & no minimum order, 5* FSA rating. Fully Insured and Registered with WCBC. Please call us for availability **07904 045216**.

PLAS MADOC AREA SUPPORT AND LINKS

WE ARE PLAS MADOC

WAPM. The aim was to ensure people were aware of the support available, could make contact if they needed support and also to keep residents connected. In addition we have established a **WAPM WhatsApp** support group – we are mindful that members of our Community may need some support -whether that be help to pick up a prescription or just a friendly chat! Current requests for support include foodbank parcels, food shopping and also prescription deliveries. If anyone is interested in volunteering they can email **WAPM** through donna.jordan@avow.org



We Are Plas Madoc mobile number: 07394 465113

WAPM SUPPORT GROUP link: <https://chat.whatsapp.com/BF3emsMzUqJ8zxBcxI23hr>



THE LAND - claire.pugh@avow.org

Provision for children, young people and families includes online 'Playschemes' We are using the closed Facebook groups to connect with you and we will be looking at additional ways to remain connected with the children/families during this difficult time.

Facebook - <https://www.facebook.com/playon.plasmadoc>

The Land is continuing to provide support to Parents/ Families within '**Kettle Club**' running regular quizzes and a weekly chat group. - <https://www.facebook.com/groups/1100684493315531/>

We are building planter troughs for the children, they will have a planter trough, compost and seeds/ seedlings to grow strawberries and sunflowers, it'll give them a place to garden whilst they're at home (*without digging the garden up*). A new, unexpected project that came into fruition was greenhouses – one of our amazing volunteers has volunteered her time to take care of our Land seedlings for the next few weeks and months until we can give them to the children and families on the estate.



Little Sunflowers have delivered home activity packs to their *Flying Start* families and are sharing resource and activity ideas on their Facebook page for more information please email sharon.evans@avow.org

Please note if you live in Plas Madoc and the following adjoining streets:

Ash Grove, Oak Road, Maple Drive, Maes Madoc and also Chatham Close, Off Rock Road we are here to help and support you and your families. Please contact us on the phone numbers above.

CHINWAGS

FEELING LONELY? FANCY A FRIENDLY CHAT?



Please call or text 0739 446 5113 or message 'We are Plas Madoc' on Facebook and we will arrange a suitable time to call and have a chat.

PREMIER PLAS MADOC POST OFFICE & TOP SHOP

**Mondays to Saturdays
8.30am to 7pm and
Sundays 9am to 7pm.**

Please help us by following the Government Guidelines when shopping or waiting to come inside, thank you.

Tel: 01978 820729

4 Woodward's Walk, Acrefair

CAFFI CWTCH Tel: 01978 317 800

Meals Matter is a 'free' delivery service for those ordering meals within the WCBC area.

Orders, collections & deliveries can only be taken between **10am and 4pm Monday to Saturday.**

£5 minimum order, card payments only. We are also offering a collection service for customers outside of this area. Phone to check deliveries.

Here's the flyer for 'Chinwags' - the befriending service set up by **We are Plas Madoc** so don't feel abandoned or isolated, we are here for you just call us.



A1 COMPUTER RECYCLING WALES

Geraint Hopwood from local Rhosymedre based firm **A1 Computer Recycling Wales** who closed per Government guidelines on 23 March offered to donate equipment they were not able to sell through an appeal launched on their Facebook page. This was for those in need of items like TVs to come forward, he ended the appeal after being contacted by the Maelor Hospital, Mr Hopwood decided to donate his whole stock of TVs, DVD players and Blu-ray players to them. His daughter Tayla then decided she would donate all her DVDs with them.

He said "they were very grateful for them. After all of this is over and we re-open I won't have any stock left, but I can always get more. Now I am giving away PCs, monitors, photocopiers and printers. They will be free for deserving causes - just contact us through the **A1 Computer Recycling Wales** Facebook page and let us know why you need one. Also if you have TVs or DVD players to donate, please let me know as I have had other hospitals and charitable organisations asking for more."

If any of our elderly or vulnerable customers are finding they need urgent non-work related assistance please feel free to message us and we will help you if we can.



MAYPOLE HAIR GALLERY

Important Client Information

I know I keep saying do not box colour you hair but did you know I can still order a Wella product that can be applied by you at home and help to blend up to 30% white hair, it's very easy to use and won't effect your next salon colouring service.... BUT will help at this time when going to the salon isn't possible. If you are interested please message or What'sApp me, thanks Haley.

#maypole #wella #professionalisbest #help #lockdown #staysafe #hair #roots



RECOGNISING HOW THE CHILDREN OF WREXHAM ARE MAKING THEIR CONTRIBUTION TO EVERYONE'S SAFETY.

Ian Bancroft – WCBC Chief Executive
Mark Pritchard – Leader of the Council

A thought for our children Just like the rest of us, children are having to sacrifice a lot right now. Normally, they would have been enjoying the Easter holidays...doing things with family and friends, visiting the park, kicking a football about and so on.

But this year, the need to stay at home and save lives has changed all that. So it's worth taking a moment to recognise the sacrifices our children are making, and how grown-up they're having to be as they help the country fight Covid-19.

Children are playing their part just like the rest of us and we should all thank them...and make a fuss of them whenever we can.

COMMUNITIES FOR WORK



Our offices are closed, If you need to contact your mentor and have their number, please do phone them directly. For general enquiries please email in the first instance cfw@wrexham.gov.uk or call **07976 200414** or **07976 200413** your call will be answered between the hours of **10am - 3pm**, otherwise you can leave a message and your call will be returned, however there may be a delay. We are still accepting referrals, however these will be done via telephone. So please rest assured that we are still here and will continue to update our social media pages with any changes, and will share any jobs as we come across them. **The Team.**

TURNER AUTOMOTIVE ACREFAIR

Just to let people know as of now we're operating on a strict appointment only basis. The gate will remain closed but you can contact us on **01978 448 411** for anything. We do have work booked in but we will try and help in between jobs as best as we can. Thank you.



YSGOL ACREFAIR UPDATE

At Ysgol Acrefair we have settled into this strange new way of school life well and are very pleased to be able to help and support the families of some of the key workers in our community. The children who have been in school have been busy doing PE with *Joe Wicks* most mornings then taking part in a wide range of activities from painting rainbows, developing their own worlds using *Minecraft for Education* and helping us to develop our *Learning Garden* in the school courtyard. In the learning garden we have planted lots of vegetables, created a pond and revamped the bug hotel, and created a 'loose parts lab' which we can't wait for the children to try out once they are back in school. We have also been very busy in the Foundation Phase allotment!



Over the Easter break the children took part in Easter egg hunts and Easter arts and craft activities. We are enjoying communicating with parents and children via 'SeeSaw' and *Google Classroom* and have loved seeing the work that the children have been doing at home- keep it coming in! We have created a new facebook page to share more information, including a special message from our staff to the children. All information about booking into the child-care provision is available on our school app, with a booking form published each Tuesday for the following week. We are missing all of the children and families who are part of our school community very much but are glad to hear that they are following advice to 'stay home and stay safe!'.

Community Support Officer
PCSO 3612 Purdy Jones
 Mobile: 07989 165527
 email: Purdy.Jones@nthwales.pnn.police.uk



The Towers

Childrens' Day Nursery


Full or Part Time Childcare
From birth to 5 years



Proprietor: A R Roberts B.ed, M.A.

 The Towers, Llangollen Road, Acrefair
Wrexham LL143SG

Tel 01978 822446



TOWERS DAY NURSERY

Due to the latest guidance we will be opening the nursery ONLY for key worker's children until further notice during the current crisis.

Sessions are 8am-1pm, 1-6pm or 8am-6pm for birth to 12 years.

For any further information about Towers Day Nursery or to book you child in please call us on **01978 822446** thank you.

VETERANS GATEWAY We want veterans and their families to get whatever support they need, easily, wherever they are, whenever they need it. Veterans' Gateway is the first point of contact to make that happen. So when you need to be referred to the right help quickly, talk to us first **Call 0808 802 1212** or **text 81212** and find us on Facebook



VETERANS' GATEWAY
The first point of contact for veterans seeking support

MORRISONS EASTER BUNNY DELIVERS EASTER EGG JOY TO YOUNG AND OLD IN CEFN MAWR AREA.

It is rare that words fail me however, the generosity of our community and beyond has moved me. I had met with a vulnerable woman who was without a television as hers had been vandalised. She didn't ask for one but after being with her for a couple of hours I realised just how much difference having one would make to her. Without it she was on her own and struggling with her own issues, whereas with one she could lose herself in a programme and, for a while at least, she could forget her troubles. Some of us may take tv's for granted, but try to imagine self-isolation without one. The offers of a tv came flooding in and I was able to collect one from a local lady, Amanda H, Big thanks to her for her kind gesture.

I have received many calls and messages from people who are beginning to struggle with mental ill health and wellbeing. I appreciate that not everyone has family, friends, or neighbours that they can call upon, which is where I come in. My contact details are on here and you are encouraged to message me if you need a chat, a listening ear, or just to hear another voice. If you find that I'm not available then I urge you to contact Tyger on **07532 780007** who will pass messages onto me (she is my backup secretary/pa). I have an abundance of fun, crazy and silly ideas, I can make you laugh or cry (happy tears by the way), and I can offer that reassurance that there is someone out there who cares. Additionally, I can signpost you to other agencies if need be. For those of you that haven't met me yet, you won't regret getting in touch.

If I'd have had prior warning I would've worn my bunny ears over Easter as I was out in the sun delivering Easter eggs that were kindly donated to us by **Morrisons Wrexham** through their helpful **Community Champion Adriana**, who has the Bunny Ears! This was thanks to them being contacted by **Kris Morrison** from **CRNCA** who asked if they could help put a smile on a few peoples faces . What a wonderful job I have!! I went to every apartment at Llys y Graig wishing them a Happy Easter, where the eggs were happily received. I also delivered eggs to several unsuspecting older people within our community. Thanks to Gaynor for her sterling work collecting and delivering your prescriptions and to Derek who is being her chauffeur.

All that remains to be said is please look after yourselves and if you need anything then don't hesitate to get in touch, nothing is too big or small. Many thanks, Marie-Claire. Call me on **07925 048711** or email cefncommunityagent@gmail.com



CRNCA

Local children with Easter Eggs shared by CRNCA thanks to **Morrisons** very kind donation. The Easter Bunny and Nolan delivering the tasty treats left and Marie Claire getting ready to do her egg run. If you are not able to get your shopping due to self isolating **Morrisons** offer a **Doorstep Delivery Service** for the elderly and vulnerable members in our community please call **Kris** on **07531 310335** or **Tyger** on **07532 780007** for details



COVID-19 (NOVEL CORONAVIRUS) WCBC PUBLIC BRIEFING NOTE 20.4.20

Key messages for today

It's important we keep looking out for children. If you're concerned about a child or young person, you can [contact Children's Social Care for advice](#). We're introducing a new direct payment system for parents with children who receive free school meals. [Register now](#).

The Welsh Government will pay for childcare for pre-school aged children of critical workers [Find out more and apply on our website](#)

Ian Bancroft – Chief Executive WCBC

Mark Pritchard – Leader of the Council

Safeguarding our children

One of the positive things to come out of the current emergency is the way people are looking out for each other. Looking out for their families, friends, neighbours...and even strangers. Trying to help where they can, and trying to keep each other safe. It's really important we keep looking out for each other, and thinking about the welfare of other people...and that includes children.

And as well as taking care of our own children, we need to look out for other children and young people, and if we see anything that worries us, get in touch with the appropriate people or support services. Our lives have changed dramatically over the past few weeks, but amid all the daily challenges we're facing, it's important we keep looking out for children. Children and young people who are vulnerable or struggling in some way, rely on us as adults to look out for them.

If you're concerned about a child or young person, you can [contact Children's Social Care for advice](#).

<https://beta.wrexham.gov.uk/service/childrens-social-care>

Stay at home. Protect the NHS. Save lives. Please continue to follow the Government's instructions. Stay at home, except for essential journeys and to exercise locally once a day, and keep two metres away from anyone you don't live with. By doing this, you're helping keep Wrexham as safe as it can be.

Free school meals

Register for our new direct payment scheme by Friday, May 1. Do your children receive free school meals? We'll be introducing a new system on Monday, May 4 as part of our ongoing response to Covid-19. The system will see money paid directly into your bank account, which you can then use to buy your children food. This will make things easier for parents and reduce the need to travel to collection points to pick up the 'grab-and-go' packed lunches we're currently providing. We don't want anyone to miss out, so please make sure you [register via the council's website](#)

https://myaccount.wrexham.gov.uk/en/service/Free_School_Meals_Direct_Payment_Application

by Friday, May 1 (you'll need to provide your bank details). You'll receive a monthly payment that equates to £19.50 per week for each eligible child

in your family. Note that if your children are still attending school (because you're a critical worker or they're vulnerable), you'll need to use the money to pay for their school meals, or to buy food so you can send them in with a packed lunch. You can still collect grab-and-go bags until Friday, May 1. For the past few weeks, we've been providing 'grab-and-go' packed lunches for children who receive free school meals who aren't in school at the moment. We've been doing this through 12 distribution centres across the county borough. This was introduced as an interim measure to allow time to develop a new system, and you'll still be able to collect grab-and-go packed lunches up to and including Friday, May 1.

But from Monday, May 4 you'll need to have registered for the new direct payments system so you don't miss out. If you have any queries, email us at freeschoolmeals@wrexham.gov.uk

Reminder free childcare for critical workers

1. *Are you still going to work?*
2. *Are you identified by your employer as a critical worker?*
3. *Do you have pre-school aged children?*

If you can answer 'yes' to all three questions, did you know that free childcare is available for your children? The Welsh Government will pay for childcare for pre-school aged children of critical workers during the Covid-19 pandemic.

[Find out more and apply on our website](#).

<https://beta.wrexham.gov.uk/service/childcare/critical-workers-get-free-childcare>

Please pass this message on to your work colleagues

Reminder bin wagons

No-one wants to be the cause of their entire street not having their bins emptied, so please...if you park your car on the road, make sure there's enough room for our bin wagons to get past.

[Read the article we posted last week](#).

<https://news.wrexham.gov.uk/parked-cars-causing-access-problems/>

Reminder are you eligible for business support?

We've already paid out more than £14 million to 1,220 businesses in Wrexham as part of the business rates relief support announced by Welsh Government. Although claims are still being received each day, anyone who hasn't applied yet is encouraged to [check if their business is eligible and – if so – submit an online application](#).

<https://beta.wrexham.gov.uk/service/covid-19-support-businesses>

If you do apply, please check the details you provide very carefully – especially bank account numbers and sort codes – as incorrect details can lead to delays in payment.

Reminder – reliable sources of information about Covid-19

Latest information on the virus and what people should do about it is provided by:

Daily TV statements by the Government including by Government ministers. Daily official briefings from the **Department of Health and Social Care** at 2pm,

<https://gov.wales/health-social-care>

and **Public Health Wales** at 3pm

<https://phw.nhs.wales/>

CEFN SPICE 01978 824222

1 Railway Terrace, Cefn Mawr

Free deliveries from 5pm to 10pm, within a 4 mile radius, minimum order £15

Email: info@cefnspice.co.uk or order online from www.cefnspice.co.uk. We are open Wednesday to Monday from 5pm to 10pm, closed Tuesday



MATTS BARBER SHOP

Four weeks in and missing this place, we hope you and your families are all well and can't wait to get you all back in these Belmont's! [#mulletitisthen](#) 🇬🇧❤️ Oh! And don't forget to drop me your Photos [#DIYhaircuts](#) on our Facebook page.

How to order from Fry Fresh

Download the Fry Fresh App Create an account Place your Order We deliver to your door

FRY FRESH EDIBLE OILS LTD - 01978 799704

Offering household goods delivery 7 days a week. Place your order before 2pm to receive next day. Breakfast Bundle Discount!! Order Eggs, Bacon, Fresh Milk, and a loaf of Kingsmill Bread with either Ketchup or Brown Sauce and get 10% off your order. Simply add these items to your cart to activate the discount! Free next day delivery, Download our Fry Fresh App for full product details

CRAIG ROBERTS TRADITIONAL BUTCHER Crane Street, Cefn Mawr Tel: 07717 203181

Home delivery only, contact us via Facebook or text, with: *Name, Address & Order details*. Please place all orders before 5pm for next day delivery to the following areas: **Newbridge, Cefn Mawr, Acrefair, Rhosymedre, Plas Madoc, Garth, Trevor, Fron, Pentre, Whitehurst & Chirk**. Some meat items may not be available, I will put something else in, there will be limits on the amount of meat we let you to have of each item. thank you for your support.



ACS Technology ACS is a local IT support company that provides support to small businesses and private customers.

We can provide remote support for customers who do not want to leave their home or business or have us visit them due to Covid-19 please call or email see details below, thank you.

ACS Technology Computer & IT Services

Sales, Repairs & Upgrades
Home and Business customers
Telecoms, both traditional and VoIP
Call-outs and Remote Support
Internet, Wi-Fi and Networking
Backup & Security Solutions
Custom PC Building, Data Recovery, CCTV

Please call us on
01978 822135

Or email: www.acstechnology.co.uk
Unit G1A Wheatsheaf Workshops, High Street,
Rhosymedre, LL14 3YE

STAY AT HOME

PROTECT THE NHS

save lives

UPDATE FROM DEBBIE DAY Donor Engagement Co-ordinator

I just wanted to update you as I always try to do on how we got on with our new blood donation sessions at Wrexham last week. We did very well, with 150 attending and 140 donations collected over 3 days, meaning *420 lives potentially saved*...a fantastic result I'm sure you'll agree.

We are going to be continuing to collect in this way, visiting centralised donation hubs for the immediate future.

We have 4 visits to **Chirk Parish Hall** on **April 27, 28, and 29 and 1 May**, with another 3 visits to **Pembroke House Wrexham** on **May 5, 6 and 7**, all by appointment only. Please call us on **0800 250 266** to book your appointment now, thank you.

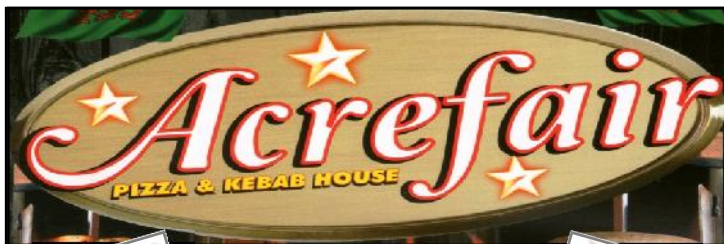


FARM AND PET PLACE GLEDRID

Open weekdays from 9 to 6pm this may be subject to change. We have a click and collect only service - please order online at www.farmandpetplace.co.uk or phone in advance on 01691 770084 or 01492 542662. Thank you for your support during this difficult time. If you have had any problems with placing a Click & Collect order please let us know via Facebook messenger. We are here to help. Thank you for your support and stay safe.

ROWLANDS PHARMACY CEFN MAWR

Please note we are only allowing 2 people in at a time and ask that if you are queuing outside you keep to the social distancing guidelines
Open: Mon to Fri 10am to 1pm & 2 to 5.30pm.
Sat 10am to 1pm. **Phone 01978 822600**
Medical Hall, Crane Street, Cefn Mawr LL14 3AD



Llangollen Road,
Acrefair LL14 3RP
(by the Eagles Inn)



01978 810 375

Order online at Food Hub and
www.acrefairkebab.com

Free Delivery starting from 4pm
Minimum order £9

- ♦ Chicken Meals ♦ Kebabs ♦ Burgers ♦
- ♦ Pizza Special Meals ♦ Kids Meals ♦

NEW OPENING TIMES

Mon, Tues, & Thurs 4 to 11pm. **CLOSED WED,**
Fri 4 to 12am, Sat 2 to 12am, Sun 2 to 11pm



Free Car Parking
Opposite



We are open for business as usual, can Please see our order options and opening times as above. Updates will be put on our Facebook page, stay safe. Thank you, **Acrefair Pizza & Kebab**



Crane Street,
Cefn Mawr,
LL14 3AB.

We are more than happy to help if you have any concerns at this time if we can. We will answer your questions as quickly and as promptly as possible.

You can get in touch with us by:

Email: acrcefn@gmail.com

Tel: 01978 821863

Or text us on 07887 691755



CEFN MAWR CONVENIENCE STORE (Hinds Shop)

Bro Gwilym, Cefn Mawr

Paypoint • Lotto • Daily Papers

Your Local General Stores • Off Licence

• Paper Delivery • Parcel Collect Plus

Open 7am to 9pm

7 days a week



Tel 01978 810985



CEFN MAWR POST OFFICE Tel: 01978 823090
Mon/Tues/Thurs/Friday 9am to 5.30pm, Wed 9am to 1pm & Saturday 9am to 12 noon. If you need to access your bank account, pay bills, top up your gas/electricity/phones or any of the other many things we do at the post office or require provisions, we are here for you throughout.



How is everyone? Hope everyone is keeping well? Following Government guidance we will be closed for at least another three weeks.

Once we can re-open we will reschedule all cancelled appointments as soon as we can.

Any guests requiring advice or homecare products, like shampoo, conditioner or styling products can direct message us on **Facebook** or **instagram**.

Please stay home and stay safe. We look forward to seeing you all soon.

VOLUNTARY POPPY APPEAL ORGANISER

Poppy appeal organiser wanted for Cefn Mawr, Newbridge, Rhosymedre, Acrefair and Trevor. Must be car / van driver and have internet access.

If you are interested in volunteering for this position please contact **08088 028080**

Poppy Wreath Information: to order a wreath please contact **01622 717172** and pay by using your debit or credit card, you don't have to wait until Remembrance to order, you can do it now.



**Magnolia House
Residential Home**
Park Road,
Rhosymedre, LL14 3EF
Tel: 01978 824445

Family run 17 bedded Residential Home

Bathing/Showering ▪ Daytime Activities

Home Cooked Meals ▪ Day Trips

Chiropody Service ▪ Hair Dressers Service

We offer a 'home from home'
magnoliahouse1@outlook.com

www.magnoliahouserestidentialhome.co.uk

J FRANCIS ROBERTS & SON

FUNERAL DIRECTORS EST 1895

Need support and guidance at this difficult time? We are here to help.

- Private Chapel for Services
- Private Chapel of Rest
- Family Run Business
- Available 24 hours a day 7 days a week
- Providing Funeral Services to North Wales and Shropshire Border for 120 years
- Golden Charter Funeral Plans Available

Golden Charter
Funeral Plans



For more information or help call us on 01978 810 884

Or call in and see us at:

10 Crane Street, Cefn Mawr, Wrexham LL14 3AB

www.funeralserviceswrexham.co.uk

At J. Francis Roberts & Son Ltd. rest assured we are doing everything possible to continue providing you with the same high quality service. At this very difficult time we will be working even more closely with you and your family to make sure your individual situation is fully considered.

How could the current situation with COVID -19 virus affect the funeral of my loved one?

Currently funerals in The Chapel at the crematorium are continuing as usual. If this changes we will let you know immediately.

A maximum of 20 mourners will be able to attend a service in The Chapel at the Crematorium.

Additional mourners will be able to listen to the service via the speakers outside the crematorium building, standing in groups no closer than 2 meters (6') apart.

Unfortunately **you will be asked not to gather round, touch or kiss the coffin** at the end of the service.

Sadly **a service in a place of worship is not currently possible.**

If your loved one is to be buried this will be carried out with a short service at the graveside for close family and friends only.

When the time is right for you and when congregations are allowed to gather again **we can help you arrange a special memorial service or a Mass** in memorandum

How are we tailoring our service to meet the current government advice on social distancing?

Unfortunately we are currently not able to visit you in your home. We are asking you to come to our office to make arrangements and to sign any necessary paperwork. However we ask that no more than 2 people come at any one time. This is to ensure we can adhere to the advice to remain 2 meters (6') apart.

If you are unable to come to our office we can easily discuss all necessary arrangements over the telephone. If there are forms that need to be signed we will deliver them to your home. We would be very grateful if you could sign the forms while we wait outside. To avoid transmission through physical contact **we have taken the tough decision not to shake hands.** Hand-washing facilities and hand sanitiser are available at all of our locations for you to use.

WREXHAM CORONAVIRUS SUPPORT AND ASSISTANCE

A Wrexham-wide group formed to signpost people in need of assistance and support as a result of coronavirus. The group accommodates a wide variety of needs, from providing information, locating essentials in the supermarkets and businesses or volunteers making deliveries to light-hearted posts to lift moods. Check their Facebook Page: <https://www.facebook.com/groups/2922926727729058/>

Right now, there's a lot of information,
advice and opinions around. We know
how overwhelming it can feel.

Let us help. For workplace wellbeing support relating to COVID-19,
visit mentalhealthatwork.org.uk/coronavirus

MENTAL
HEALTH
AT WORK

COVID-19 (CORONAVIRUS) AND ITS EFFECTS ON MENTAL HEALTH AND WELLBEING.



Doeth am Iechyd
Cymru
HealthWise
Wales

What might be the psychological and social effects of Covid-19 in Wales? How can we best support people during this crisis?

HealthWise Wales is supporting a new study by researchers at *University College London (UCL)* into the effects that **Covid-19** is having on people's mental health. The study will identify how the news about coronavirus is affecting people, whether people are having to isolate, and their experiences of doing so. The findings will be used to help develop ways to support people psychologically and socially during this outbreak and identify which groups are most at risk.

FURTHER DETAILS AND HOW TO TAKE PART

This UK-wide study already has 45,000 participants, but **Wales** is currently under represented. They would also like to hear people's opinions on the **Welsh Government's** handling of the virus and its effects on the people of Wales.

The study is open to all adults in the UK and involves answering an initial 15-minute online survey, followed by a shorter 10-minute follow-up survey once a week whilst social isolation measures are in place. Please note you can easily opt out of these follow-up surveys, should you wish.

To **take part** in this vital research please copy the link below into your browser

<https://redcap.idhs.ucl.ac.uk/surveys/?s=TTXKND8JMK>

JOHNSTOWN COMMUNITY SUPPORT GROUP

We are working with our community agent for Rhos, Ponciau and Johnstown and AVOW. We have a core number of people willing to support the community. This Group is about sharing concerns so we can try and address as best we can, it is not for general issues or minor issues.

David Bithell says he will be providing daily updates from the Wrexham Council and try and answer concerns as they come in. he is also working as Chair of the Governing Body with Ysgol yr Hafod who have been working to support the community at this time. Join us on **Facebook**.

Our **Community Agent** for Johnstown, Ponciau and Rhos, is **Michelle Wynne** she can be contacted during office hours, telephone **07851 798630** or email rhoscommunityagent@gmail.com

DISCLAIMER

*Whilst **The Community News** makes every attempt to ensure the accuracy and reliability of the information contained in these pages. **The Community News** does not take responsibility for advertisements and articles which are the sole responsibility of the contributors.*

TESCO CEFN MAWR OPENING TIMES

Monday to Saturday 7am to 10pm,
Sunday 10am to 4pm

Our opening time priorities to help those customers who need extra support are:

NHS Workers with valid ID

Tuesday 9 to 10am, **Thursday** 9 to 10am and **Sunday** 8 to 9.30am. Please note we will open our checkout to NHS workers from 8am.

Vulnerable Customers

Monday 9 to 10am, **Wednesday** 9 to 10am and **Friday** 9 to 10am.

Please help us by respecting these hours as now more than ever, every little helps, thank you.

TESCO

ONE TROLLEY.

ONE PERSON.

EVERYONE ELSE PLEASE

STAY AT HOME.

YOUR LOCAL TESCO STORE ISN'T THE

PLACE FOR SOCIAL GATHERINGS.



Anthony Roberts

Tree & Garden Care



All foliage from trees
cleared away



- **Seasoned Hardwood Logs for Sale**
- **Tree Surgery**
- **Hedge Trimming**
- **Fencing**
- **Landscaping**
- **Stump grinding**
- **Patios**

Tel: 01691 770054 or 07725 819414

antsgardening@hotmail.com

It is very hard to think that this is the 6th edition of this weekly briefing dealing with issues that we could not even imagine 6 months ago. There are so many new words and terms in our vocabulary from Covid19, Coronavirus, lockdown, PPE, Social distancing, virtual pub, zoom, flatten the curve to name but a few. For anyone doing quiz seek answers at <https://bit.ly/2Kfgn9x>

Many people are starting to show anxiety as we head for at least another three weeks of restrictive movements. Case number have remained relatively low for Wrexham and North Wales up to this weekend when the number have more than doubled in some counties- the evidence is clear on the heat map <https://bit.ly/2Kej6Qx> to show that we can't relax and in Wrexham the number of cases has doubled in a week from 47 to 90 per 100k population. This next week will be particularly challenging if the South to North projections are accurate.

Role of volunteers:

The AVOW Volunteer Bank has now reached 600 registrations- everyone has been contacted last week explaining the demand at this stage is not as high as expected for support needs. The low demand does not however reflect low engagement with Street level volunteers who AVOW have been referring to directly. There are many 100's of people who have come forward and there have been joint links to find the most suitable volunteer to support those in need.

The Health Board have also been recruiting directly and anyone wanting to volunteer for the scheme sign up on <https://awyrilas.org.uk/bcuhb-volunteers>

Anyone knowing someone who needs help or assistance can email Covid19@avow.org for the AVOW Covid Team to process. AVOW has extended hours and the emails are monitored over the weekend to respond to any request for support.

Support for people who may have mental health issues:



It is being reported from a number of locations that the anxiety levels are again raising with people and there is a need for more help.

The Wrexham based C.A.L.L. help line service is available for people who may be suffering from mental health problems. <http://www.callhelpline.org.uk/> **0800 132737**

FOOD – Shielding Parcels:

just under a 100 people who are currently receiving the Welsh Government provided Food Parcel for those people who have received a 'Shielding Letter' and registered with the Council. The Council **CANNOT** add anyone to the list, they have to discuss with their **GP** who should be able to process although there may still be some flaws in this later part of the process. It should be remembered that these are last resort when there is no other access to support, AVOW have volunteers registered in every Postcode area so able to arrange response across the County Borough <https://bit.ly/34rVbGF>



Free School Meals: UPDATE Looks like there could be good news this week with the introduction of a cash payment scheme to parents to replace the Grab and Go Bag system the council set up temporarily. It appears the new scheme will enable all children who have Free School Meals to benefit as their parents will now be having cash to make additional shop purchases. The scheme is being set up by Welsh Government and implemented on a county by county basis.



Prescriptions: REMINDER -there are many volunteers who are collecting prescriptions but one of the biggest issues currently is the waiting times- which in some instances can be over an hour. There have been extensive discussions about boosting the Pharmacy capacity to deliver more prescriptions which have not finalised a solution. For the time being individuals seeking help should look towards a community or AVOW bank volunteer.



Volunteers should take ID and a note from the person whose prescription it is then most pharmacies will hand over medication. There may be some issues with 'Controlled Drugs' and this needs to be arranged on a case by case basis.

First AVOW grant given out!! Funding for voluntary groups available NOW:



Very pleased to announce the first grant from the AVOW run grant scheme funded by the Welsh Government as been given to **The Vic Studios** to help them develop online teaching and music resources to maintain contact with all of their users. The funding will also help with the future sustainability. Applications are open for the local scheme that has a weekly panel meeting to assess applications up to £1000. <https://bit.ly/2JZ274K> Larger amounts up to £100,000 are available from WCVA. <https://bit.ly/34vdxX3> <https://avow.org/category/grants/>

Volunteering/staff Issue this week-

Furloughing staff: Voluntary groups who have employees are entitled to claim from the Government if they furlough any staff due to insufficient funds. Groups using the AVOW payroll service will be supported through the claims process. The Government Job Retention programmes and Welsh Government Business Support packages have most available for community organisations. <https://bit.ly/3bk39Ev> for Job Retention and <https://bit.ly/2VIR8c6> for business support packages in Wales.

Coronavirus – Ask a Friend Cash Access Scheme

There have been lots of concerns about how to pay for shopping when nonfamily members go to shops. A modified scheme established by the Post Office has now been extended to other banks. This scheme enables an individual to ask for a one-time barcode sent via text, email or post for a stipulated amount. They can then give a trusted friend or volunteer the voucher to be exchanged for the cash requested. Previously, only a named individual, such as a carer, could collect cash in this way on someone's behalf. Now any trusted neighbour or volunteer can do so. Link to news article about the scheme:

<https://www.bbc.co.uk/news/business-52229698>

<https://www.postoffice.co.uk/post-office-payout>

PPE

There is considerable stress about the shortage of PPE across Health and Social Care – to assist with the sourcing and quality checks. To find out about anything to do with PPE information is available on:

<https://awyrilas.org.uk/ppe-enquiries-north-wales>

GREAT NEWS - Wrexham Visor PPE fundraising and production project



There has been an overwhelming response to the appeal AVOW launched 10 days ago for funds to make PPE visors in Wrexham for our health and social care front line staff. The appeal has raised £13,000 for the purchase of new machines and materials. A really big thanks to all the schools and others in the area who are now working so hard to produce the much needed equipment and to Cllr Phil Wynne and Dr Graham Sperey-Taylor and all those volunteers who are working so tirelessly to convert the funding into products.

Heath advice in differing languages:

If anyone knows of residents who have other languages as at their first then there are a number of information sheets available in differing language that could assist them to understand the current Covid issues <https://bit.ly/2KaQPdt>- Stay at Home and Protect the NHS.

Research into Covid and people's lifestyle:

There are going to be many research projects around what is like to be living through current pandemic to help with planning health services and other support for current and future developments. The success of all

of these will be dependent on large numbers of people taking part – please help researchers to help us in the future <https://bit.ly/3eHqS3w> Covid symptom tracker app is designed to map how people are feeling and what their medical conditions may be – this is vital to help track the spread and help assess where any hotspots could be occurring in the future. Download the app today the data from the COVID-19 Symptom Tracker app will be shared daily with the Welsh Government and NHS Wales. It will give early indications of where future hospital admissions are going to be. Over 38,000 people in Wales have already signed up to the app, but we need as many as possible to make the data most useful. <https://covid.joinzoe.com/>

English <https://bit.ly/3ex71DQ>

Welsh <https://bit.ly/2xIFAq2>

AVOW hopes to keep this as a weekly briefing to share with our community's support information and guidance if there are issues you want information on email john.gallanders@avow.org The content of this briefing is provided for information only. It is not intended to amount to advice on which you should rely. You must obtain professional or specialist advice We do not accept responsibility for any errors, omissions, misleading statements or the consequences thereof

<https://avow.org/terms-and-conditions/>

**HEDDLU GOGLEDD CYMRU
NORTH WALES POLICE**

#COVID-19

North Wales Police will use new dispersal powers to protect the public.
We will adopt a four phase approach:

ENGAGE:	EXPLAIN:	ENCOURAGE:	ENFORCE:
with the public	why dispersal is vital to reduce the spread of the virus	people to disperse and go home	where necessary

Officers will make sensible decisions, employ their judgement and continue to use other powers.

ENFORCEMENT WILL BE A LAST RESORT

#StayHomeSaveLives

making North Wales the **safest** place in the UK



LLANGOLLEN CORONAVIRUS HELP GROUP

A group formed in Llangollen to support the most vulnerable in the community with errands, information distribution and community/emotional support. You can signpost the group to those in the high-risk category including over 70s, people in isolation and anyone who is vulnerable, or contact the members on a person's behalf.

The group is run entirely by volunteers and asks that people be patient when waiting

for a reply. Check their Facebook Page: **Llangollen Coronavirus Help Group**

<https://www.facebook.com/groups/2605345223029039/>

Contact Numbers:

Support Line: Cat @ Wingetts 01978 861366 Press "0" to be connected Mon to Fri, 10am to 4pm

Out of Hours: Mike Connolly 07375 374914 From 4pm to 8pm

Llangollen Town Council: Charlie 01978 861345

"Buddy Service" Are you in need of a Chat or a daily catch up? Call **Chem** on **07813761766** or email him on chemshouts@gmail.com

Please look out for our latest supplier leaflet *Llangollen Neighbourhood Support Group COVID -19* which has details of all our local suppliers and shops still open and takeaways offering collection and or delivery. Below is a selection from our leaflet..

LLANGOLLEN SPAR

New opening times 7am-9pm Monday to Sunday
Home delivery available for vulnerable and self isolating. Please call the store **01978 860275**. Call before 1pm for same day delivery 7 days a week
Card payments accepted

GWYN BUTCHERS

7.30am-3pm To Order & Pay Call **01978 860075**
Fresh & cold meats, Mince, Chicken, Etc...
Delivery—If you have also ordered with *Dee Valley fruit and veg*, advise on calling and they will deliver your order all together.

STANS LLANGOLLEN

Small shopping requests will be done by volunteers
Call our support line **01978 861366**
A volunteer will collect your shopping list.
Payment Cash or card over the phone at checkout

ALDI & HOME BARGAINS

Small shopping requests will be done by volunteers
Call our support line **01978 861366** A volunteer will collect your shopping list. **Payment** - Cash in an envelope only at this point

BLUEBAY LAUNDRETTE

Service wash Monday, Wednesday and Friday from 9am to 5pm. we will wash, dry & fold it for you
We are offering to collect, launder and return
Please call Jayne or Sarah on **01978 869227**

LLANGOLLEN POST OFFICE

Stans, Berwyn Road, Please note the opening hours have now changed until further notice.
Monday & Tuesday 9am to 5.30pm, Closed
Wednesday, Thursday & Friday 9am to 5.30pm.
Saturday 9am to 1pm Call **01978 869011**

ROWLANDS PHARMACY LLANGOLLEN

Bishops Walk, Llangollen LL20 8RZ
We are only allowing 2 people in at a time and ask if queuing outside please keep to the social distancing guidelines.
Open Monday to Friday 10am to 5.30pm, Closed
Saturday please phone to check opening times
Phone 01978 860657

PRESCRIPTIONS

We have had a lot of requests from surrounding areas, Local Community Agents who are covering such areas have been contacted. For Llangollen the support number is the same for prescription delivery **01978 861366**. **Rotary** are now collecting at 5pm each day, please note all prescriptions need to be called in by **3.30pm** for same day delivery.

LLANGOLLEN MEDICAL CENTRE

We ask that patients who have access to email and who have a non-urgent request or query contact us via Llangollen.admin@wales.nhs.uk
This email account will be constantly monitored by staff. Patients who do not have email access or who need to speak to a doctor urgently are asked to ring us on **01978 860625**. They will be added to a daily triage list, and contacted that day by a clinician.
Unfortunately patients will not be able to request a specific clinician. Repeat prescriptions can be order by emailing llangollen.admin@wales.nhs.co.uk

ZINGIBER WHOLEFOODS

Health Food Store Llangollen. Payment via contactless, bank transfer or cash To order please call **01978 862676** Text or WhatsApp to **07542 861897**
Email zingiber_orders@btinternet.com

LLANGOLLEN ZERO WASTE & FOOD SHARE PROJECT

OPEN Monday, Wednesday, Friday and Sunday from 2pm - 2.30pm at **Pengwern Community Centre**. Here to help everyone who is struggling, we understand that the current crisis has put many more people in financial difficulty. **PLEASE DO NOT GO WITHOUT FOOD**. Contact us using the **message button on our Facebook page** or phone us on **07710 789 854**. We will respond as soon as we can.

DEE VALLEY PRODUCE FRUIT, VEG & PLANTS

We also offer a collection service. You can place an order pay over the phone or via contactless at your car window and we can put your order straight in you car boot for you. Call us on **01978861805** Monday-Saturday 9am-5pm

VISITING YOUR LOCAL PARK IS NOW VERY DIFFERENT

For many years we've been encouraging you into our parks for enjoyment, picnics and taking part in organised events. Now, however, things are very different and we no longer encourage you to travel by car to any of our parks. Instead, we're asking that only people who live locally visit as part of their daily exercise including walking your pet. You should not be driving to any of our parks.

Even for those who are lucky enough to live near a country park we have had to put in place guidelines and you will now see signs now in place which you should take notice of.

The new park guidelines advise:

Do not visit a park if you have any symptoms – fever, coughs, shortness of breath. See NHS guidelines, if this applies to you

Observe social distancing, staying at least two metres apart from other people.

If the park is crowded do not enter if you cannot safely observe social distancing

Consider if you can visit your park at different times (later/earlier) to allow parents, children and older people to use these spaces

Use all areas of the park that remain open so you can maintain an appropriate distance from others

If the park is crowded, consider exercising in quieter less-used streets

Avoid touching surfaces (such as gates or hand-rails) and follow Public Health Wales advice on hand washing including washing your hands as soon as you get home.

Keep your dog(s) on leads at all times

People should not be driving to the park to walk their dog, this does not count as essential travel

Please respect those managing these spaces including following any instructions from officials on site. Temporary measures are being put in place to safeguard you

Do not use areas of the park that have been closed such as play areas, outdoor gyms or sports facilities – these are closed for your safety

Picnics/ Barbecues are not allowed along with sunbathing within the park grounds

The guidelines are there to keep you safe so please take notice of them and make the appropriate adjustments to your visit.

We all hope to be inviting you back for all your previous activities soon but for now things have to be different so please stay home, stay safe and protect the NHS. Whilst taking your daily exercise please remember the 2 metre guidance whilst in the park and on your walk there and back.

FOODBANK CENTRE TIMES

We have reviewed our operations and have made the decision to suspend our satellites in **Cefn Mawr and Hightown** for the foreseeable future. If anyone has been disadvantaged by this please email us at

info@wrexham.foodbank.org.uk

If you have a voucher you can collect from one of the centres listed below:

Monday: Bradley Road Baptist Church 1.30 to 3pm

Tuesday: St Mark's Church, Caia Park 12.30 to 2pm

Wednesday: Gwersyllt Congregational Church 10am to 12 noon

Wednesday: The Salvation Army, Rhosddu 3 to 4.15pm

Thursday: Cefn Mawr Closed

Friday: Capel y Groes (church by Asda) 11am to 12.30pm

Friday: Hightown Closed

If you cannot get to any of these centres then you can request a home delivery by emailing info@wrexham.foodbank.org.uk and sending a copy of your voucher.

Please do not go hungry at this time, we will always try to help you. Pet food and toiletries are also usually available.

If you need a food bank parcel and can not get a referral please call the Foodbank on **07538 547971**. If you would like to volunteer to help then please email

info@wrexham.foodbank.org.uk.

WCBC ADVICE RE TISSUES

Please don't put tissue paper in your blue recycling sacks or top wheelie boxes.

Discarded tissues should be bagged and placed in general rubbish bins. If any member of your household has shown symptoms of Covid-19, tissues should be double-bagged, tied securely and kept separate from other waste. The bags should be put aside for at least **72 hours**, before being placed into your external household waste bin, thank you.



WCBC GAS SAFETY CHECK

The Gas Servicing will continue to be completed across the borough. This is a legal obligation and ensures the safety of our tenants. You will receive a phone call prior to any visit to discuss this, and precautions will be taken in line with Government guidelines. Thank you for your co-operation.

WCBC HOUSING

Please note that all of our estate offices are now closed, including reception areas where kiosks and free phones were so please do not call the Estate office. If you have **URGENT HOUSING REPAIRS**, please contact housing on **01978 298993**. For **URGENT HOUSING QUERIES** please call **01978 315305**. Thank you for your continued support in this difficult situation.

We have had several queries of how you can pay your rent with the estate offices being closed. Here are the alternative methods of paying: **0300 333 6500 (24hr payment line)**.

Online at: <https://www.wrexham.gov.uk/english/online/index.htm>

You can pay with a monthly direct debit - payable on 1st or 16th of every month (this is the easiest way for you and us) or by weekly direct debit. You can contact **01978 315305** for details and forms Rent swipe card at any open Paypoint (post office, co-op) etc.

WCBC FREE SCHOOL MEALS

Update on free school meals and distribution

During week-days, we'll continue to provide free school meals for children who aren't in school...as well as meals for all children who are still in school. All meals will be 'grab and go' packed lunches. If your children aren't in school and they're entitled to free school meals, you can collect their packed lunches from one of the following sites

- **Caia Park Estates office**
- **Plas Madoc Estates office**
- **Broughton Estates office**
- **Gwersyllt Estates office**
- **Rhos Estates office (Stiwt)**
- **The Memorial Hall Wrexham**
- **Plas Pentwyn Coedpoeth**
- **Llay Resource Centre**
- **Overton Library (Cocoa Rooms)**
- **Chirk Library**
- **Brymbo Resource Centre**

You can go to the nearest site. Packed lunches must be collected between **11.30am and 1pm** by a parent or carer. You'll need to give staff the name of your child / children and the school they attend, and you'll only be able to collect a packed lunch for your own child / children. Please continue to follow social distancing measures...maintaining your distance from other people. **These will continue to May 1.**

BIRTHS AND CLAIMING CHILD BENEFIT / UNIVERSAL CREDIT

You can now make a claim for Child Benefit or Universal Credit before you register your child's birth. Under normal circumstances, the birth must be registered before you make a claim, but the rules have been changed due to the current situation. All appointments at the Guildhall for birth registrations and marriage / civil partnership notices are suspended until further notice

USEFUL NUMBERS

WCBC Out of Hours 01978 298989

Gas Emergencies 0800 111 999
Dee Valley Water 01978 833200
Dee Valley (Leak Line) 0800 298 7112
MANWEB / Scottish Power 0845 2722424
Welsh Water 0800 0520130
Cefn Community Council 01978 821298
ACAS 0300 123 1100
Adult Social Care 01978 292066
Age UK: 0800 169 6565
CALL Community Advice & Listening Line 0800 132 737
Cambrian Credit Union 01978 266843
Caritas Surgery Cefn Mawr 01978 720450
Childline: 0800 1111
Citizens Advice 0300 330 1178
Community Fire Safety 01745 352693
Consumer Direct Wales 08454 04 05 06
Crime Stoppers 0800 555 111
Dementia Help Line Wales 0808 808 2235
District Nurses Plas Madoc 01978 812163
DAN 24/7 Drug & Alcohol Help Line 0808 808 2234
Domestic Abuse Safety Unit (DASU) 01978 310203
Domestic Violence Hotline: 0808 2000 247
Floodline 0845 9881188
Home Fire Safety Checks 0800 169 1234
Live Fear Free 0808 8010 800
Macmillan 0808 808 00 00
Men's Advice Line 01823 334244
MIND 0300 123 3393
National Drugs Helpline 0800 776600
RNIB 020 73881 266
Samaritans: 116 123
The Mix Young Peoples Helpline 0808 808 4994
Universal Credit 0800 328 5644
Wales Domestic Abuse Helpline 0808 8010800
Welfare Rights 01978 298225
Working Families 0300 012 0312
Wrexham Care & Repair 01978 268120
Wrexham Dog Warden 01978 298989
Dog Warden Out of Hours 01978 292055.
Acorn Kennels 01948 662931
Wrexham Communities for Work 07976 200414 or 07976 200413
Wrexham Family Information Services 01978 292094
Wrexham Maelor Hospital 01978 291100
Wrexham Social Services 01978 292066
PCSO Abigail Land 07974 244132
PCSO Purdy Jones 07989 165527

TY MAWR COUNTRY PARK UPDATE

Ty Mawr would like to say a big thank you to the dedicated volunteers and staff who are caring for the small animals in their temporary foster homes, and to all those kind people who offered empty rabbit Hutches Rangers are still working at the park daily to care for the larger animals and also maintain the safety of Ty Mawr and the other 10 WCBC parks. Ty Mawr Country Park is still open for local people to take their daily exercise and enjoy the great outdoors.

To reduce the spread of the virus, the play areas are closed as its thought that the virus can live on the metal of the play equipment and also to maintain social distancing. The car parks are closed to discourage people from making unnecessary journeys, and social gatherings. Thank you all for respecting these closures and Keeping your distance! Let us hope you and your families will soon be able to enjoy the parks to the full.

VANITY FUR DOG GROOMERS

To help with keeping your furbabies tidy until we can reopen I have popped some quick tutorial on wool/drop/double coats care inc nail care onto my Facebook page.

Missing you all but we need to stay home, stay safe and protect our NHS

BEAMING BALLOONS & BOWS LUXURY BALLOON & EVENT STYLING



*We offer a Bespoke range of:
Balloons, Garlands,
Door Bows, Balloon Bouquets.
Weddings, Christenings,
Gender Reveals,
Baby Showers, Birthdays.*

If you are trying to bring 'normal' to a lockdown Celebration, we can deliver to your door please call me.

SAMANTHA EVANS 07971 538847



beamingballoons@gmail.com

MARLEY'S MAGICAL CREATIONS



Hello to all our customers, this is just a message to reassure you that all your bookings are safe, we will be doing our best to rearrange your dates with you when we are aware it is safe to do so.

To ensure this we have not or are no longer taking any new bookings, when our existing clients are booked in with new dates we will then be more than happy to take new bookings. Hopefully see you all soon and stay safe.

If giving is in your blood, please help.

Chirk

Parish Hall

27 - 29 Apr and 1 May

Wrexham, Pembroke House

Welsh Blood Service

5 - 7 May

Book a lifesaving
appointment today.

welshblood.org.uk
0800 252 266



2 WOODS GARAGE

We would like to ensure all our customers we are cleaning with anti-bacterial spray anywhere we have touched before you get car back, we can also come pick your car up if key is left in it at an arranged time, bring back and you can pay over the phone, if that helps to keep your car ready for you, Please keep safe, and hope this is all over soon

2WOODS GARAGE SERVICES & M.O.T CENTRE



**M.O.T'S
WHILE-U-WAIT
£35.00**

Diagnostics Exhausts Tyres Batteries Brakes



Steering Suspension Wheel Alignment Servicing

01978 810007
www.2woodsgarageservices.co.uk

SHELTER CYMRU UPDATE

SERVICE CHANGES From 18th March 2020, Shelter Cymru closed all face to face advice surgeries and sessions until further notice. Including those delivered from offices of other organisations as well as those from its own offices. People with appointments for face-to-face advice were contacted and offered telephone advice appointments as an alternative.

CONTINUING METHODS OF CONTACT Advice and assistance will continue to be available through our **Freephone Shelter Cymru Live** service on **08000 495 495** open 9.30am – 4.00pm **Monday to Fridays**. Our web-chat advice facility is also available via our website:

<https://sheltercymru.org.uk/get-advice/>

Extensive housing advice and options information is available via our website:

<https://sheltercymru.org.uk/get-advice/housing-advice-when-you-need-it/>

We are aware that some people may experience particular difficulties accessing services by phone or online. If this applies to you or if you are helping someone who experiences these difficulties, please contact us and let us know and we will explore whether there are any other ways in which we can assist.

CEFN COMMUNITY COUNCIL UPDATE

We will re-open the George Edwards Hall when the government recommends that it is safe to do so. All Community Council meeting are cancelled for the foreseeable future, please visit our website www.cefncommunitycouncil.co.uk for up to date information in relation to Coronavirus.

Cefn Community Council Bowling Green and Play areas All facilities are currently closed until further notice

Street lights: any street lights out please can you report them with the number off the lamp post to the Clerk .

Birthdays: If you know of members in our community who are going to be celebration their 90th or 100th birthdays please can you let the Clerk know thank you.

Trefnant Cemetery: is still open however we respectfully ask when visiting the Cemetery you distance yourself two metres apart from other people.

If you require any help or guidance in these uncertain times please contact our

Cefn Community Agent on **07925 048711** or Email: cefncommunityagent@gmail.com

During this period you can contact The Clerk on **01978 821298** and leaving a message or by email: cefnmawrparish@btconnect.com

Stay safe and follow the guidelines, thank you.

ROB PARRY CELTIC COMPUTERS



Well, the inevitable has happened and I had no choice but to close for the duration of the lockdown. I have laptops ordered and waiting to be delivered, so anyone promised one will get their machines as soon as we're all up and running again. Thanks for everyone for your continued support.

Take care, stay home, stay safe and protect the NHS

HOTBINZ Ltd.
QUALITY WHEELIE BIN CLEANING SERVICE

TEL: 07512 33 44 64

Eliminates • Bad Odours • Deters Pests • Kills Bacteria • ECO

Local Wheelie bin cleaning service.

From just £3 per bin every 4 weeks.

Domestic or commercial bins.

If you would like to try our service please contact us on **07512 33 44 64**

Your bins will be professionally cleaned and left smelling fresh.

Takes 15 mins, trailer mounted system

With larger bins price varies



Bouquets & Plants
Wine - Champagne - Prosecco
Teddies - Chocolates - Balloons

Regent House of Flowers

13 Yorke Street, Wrexham LL13 8LW
01978 357 356

Still delivering flowers & gifts call us to check our availability, thanks Laura & Team
www.regenthouseofflowers.co.uk
Your LOCAL Independent Florist

COVID-19 SYMPTOM TRACKER APP



Take 1 minute each day and help fight the outbreak. Researchers from King's College London have created an app to enable people to report COVID-19 symptoms on a daily basis. The app will be used to study the symptoms of COVID-19 and track the spread of this virus throughout the UK. You can help by using the app to report on your health every day.

PLEASE NOTE: The app does not provide clinical advice and you must visit the NHS website at: <https://www.nhsdirect.wales.nhs.uk/> for all advice on coronavirus.

You can download the app by visiting <https://covid.joinzoe.com/>, where you will find more information, including details on how your personal data will be secured.

You can also download it straight from the Apple Store or on Google Play, depending on your device.

CEFN MAWR AND DISTRICT

SUPPORT GROUP Our Facebook page bringing together volunteers and those who need help in our area working with our **Community Agent** and **Cefn Community Council**. It also has updates and information. Please contact Tyger, as she is supporting our Community Agent (a bit like being her secretary/pa) by taking messages and details of what help or support you require so Marie Claire is able to spend the time she needs with those she is supporting. All information is treated in confidence as per the GDPR guidelines and is only shared with our Community Agent. Our service is free call **07532 780007** or email tyger@tygertactics.com Is there anyone that would like to volunteer to help within the community at this time? This can be as simple as just checking on neighbours, make a phone call, walking a dog, or picking up some shopping when you go out and if they have any concerns then they can contact Marie Claire on **07925 048711** or email cefncommunityagent@gmail.com



Tilston's Funeral Services

Independent Family Funeral Directors



“Helping families honour the lives of those they love”

• 24 hour personal service

• All areas covered

• Private chapels of rest

• Pre arranged funeral Payment plans available



Golden Charter
REGIONAL WINNER
Funeral Planner of the Year 2016

Visit our website at www.tilstonsfuneralservices.co.uk

Telephone **01978 822308 / 822829**
New High Street, Ruabon, Wrexham LL14 6AW

PLEASE LIKE OUR FACEBOOK PAGE
Community News Cefn Mawr, Dee Valley & District

This will keep you up to date during this challenging time. We will also keep updating information from businesses that are open and those also offering home deliveries so we can all stay safe.

You will also find an album of photos that includes the ones we could not fit in to this edition of the newsletter.





**TY MAWR COUNTRY PARK SPINNERS/
KNITTERS/ WEAVERS**

Another lot of hearts have arrived!! Thank you so so very much to all the ladies who have worked so hard making them. It is very much appreciated by the ICU Dept of Maelor hospital. If you feel you want to carry on making them, please message me for details. They are still needed unfortunately. Thank you again. Find us on Facebook or Email:junemclaughlin@btinternet.com

COVENT GARDEN WREXHAM

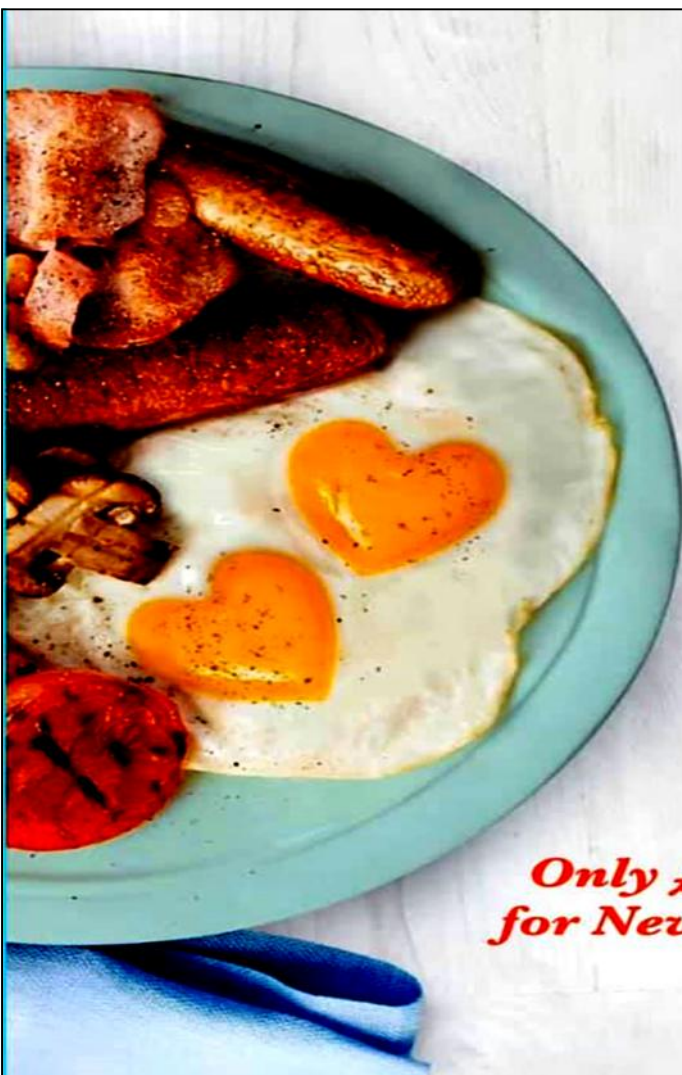


**VEG BOXES DELIVERED
FRESH AND CONTACT FREE
CALL 01978266691**

COVENT GARDEN FRUIT & VEG

We are continuing our home delivery of veg boxes, we ask please be patient as our messenger and phone lines have been extremely busy, we will get to everyone. We will take telephone orders & payment over the phone by card, we can leave a box outside for you. Please call: **01978 266691**

We welcome your **Community Information** for inclusion in the next Bulletin please send it to: **communitynews@tygertactics.com**
Message me on Facebook or tel: **07532 780007**
Don't forget to send photos, and information on your local support groups, thank you.



***Sam's Virtual
Slimming World
Group***

***Everything the same
other than actually
Attending at Group***

***Support off Consultant
& other Members***

***Slimming World Website/App-
Online Shop for members only***

***Private Facebook group full of
Motivation, Support & Recipes***

Virtual Weekly Meetings

***Only £5 To Join
for New Members***

***£2.50
Weekly Fee***

**slimmingworld.co.uk
0344 897 8000**





YSGOL MIN Y DDOL UPDATE

Firstly, may we send a message of thanks to all our wonderful parents and pupils who are doing the very best they can to ensure they're staying safe. We, at Ysgol

Min y Ddôl, cannot wait to see you all back where you belong. Our children's safety is paramount and we shall welcome everyone back but only when it is safe enough to do so. Until then, keep doing what you're doing and remember that we are here for you with whatever concerns, questions and help you may need.

Whilst the majority of the school are absent, those who are in, including staff and pupils are doing a wonderful job of maintaining our school grounds. They have been busy planting trees, weeding, painting, staining, sweeping, watering all the plants and vegetables as well as having a general tidy up. The children have been very helpful and the staff are very grateful of the extra pair of handy hands! May I please take this opportunity to remind all our parents who are entitled to free school meals that there is a grab and go facility available from the local authority whereby your child can continue to receive a free packed lunch every day. Our nearest grab and go service is available from Plas Madoc Estates Office Please all, stay safe and well.



CHIRK CORONAVIRUS SUPPORT

A community group established to provide reliable information and give assistance to anyone who needs it in the Chirk area due to the recent Coronavirus pandemic. Contact Number: **07821 297768**

Email: chirk.ca@gmail.com

ROWLANDS PHARMACY CHIRK 01691 772439

OPEN 10am to 6p, close 12 to 1 for lunch

ST MARTINS PHARMACY 01691 772348

Open 9 to 5.30 Mon to Fri, 9 to 1pm Sat. Free collection and delivery may be available for prescriptions, call to check.

STANS ST MARTINS 01691 772348

Delivery service available £5 to Chirk

THE KEYS ST MARTIN'S 01691 770258 or 07762 139 413

Delivery within a 4 mile radius 12pm to 2pm and 5pm to 8pm Monday to Saturday and 12pm to 6pm on Sunday. Please give 24 hours notice.

MG HUGHES FRUIT & VEG 01691774850 or 07973826881 or 0781155707

Daily deliveries to anyone who would like us to and if they need anything picking up from other local shops.

SPAR CHIRK 01691 773354

If anyone is struggling to get supplies let us know, we can deliver or just help anyone in Chirk pick things up etc. email: chirk@retail.afblakemore.com If you email please include a phone number for us to contact you for payment, thanks.

STANTON HOUSE CHIRK 01691 774150

Hot meals delivered daily, no meal over £5

A C EDWARDS AND SONS 01691 670721

Fruit, Veg and Dairy.

STAR PIZZA AND KEBAB 01691 778722

Delivery 4pm to 12am.

CASTLE TANDOORI 01691 772499

Tuesday to Sunday 5 to 10pm 3 mile radius.

JAMIE WARD'S BUTCHERS - 01691 772602

Call and collect: order between 10am and 12 noon to pick up between 2pm and 4pm same day.

Order between 2pm and 4pm to pick up next day between 10am and 12 noon

If you are self-isolating and unable to collect orders of £25+ can be delivered within a 15 kilometre radius within a maximum of 3 days.

CAFFI WYLFA - 01691 770492

Fresh chilled meals available for collection or delivery.

THE HAND HOTEL CHIRK - 01691 773 472

Takeaway starters, mains, jacket potatoes, pasta and panini's & sandwiches available between 11am and 2pm and 5pm – 7.30pm

ANISA INDIAN - 01691 777705

Delivery and takeaway.

Community Support Officer

Abigail Land PCSO 3926

Mobile **07974 244132**

email: Abigail.Land@nthwales.pnn.police.uk

FRIENDS OF RUABON VIRAL KINDNESS

This group has been created with the primary aim of ensuring no-one in our community has to go through self isolation by themselves. If you are self-isolating with COVID-19 we can help with Shopping, Collecting Prescriptions, Urgent supplies or just by making a friendly phone call.

We are a group of likeminded volunteers here to help. Just contact us via any of the options below, we will do our best to help you (for free)

Call or text **07741 596 812 / 01978 824087**

Email: info@friendsofruabon.co.uk

Facebook: **Friends of Ruabon Viral Kindness**

RUABON MEDICAL CENTRE

As all patient contact is now by telephone, to help us help you, please use our services carefully and adhere to the following: Please DO NOT visit the practice unless you've been asked by a clinician to attend. General enquiries cannot be dealt with if you turn up at the practice. All 'routine' appointments have been suspended until further notice.

Repeat prescriptions should be placed into the wall mounted post box beside the wooden door (at the end of the building on the left).

You can organise your repeat prescription online, please call the practice to arrange for the registration form to be posted to you. Please check pharmacy opening times when your prescription is ready to collect, as these MAY have been adjusted to help them cope during this time. We would like to thank you for your patience and understanding. Please look after yourself and others by following the latest government advice. Thank you.

RUABON POST OFFICE

Open Monday to Friday 9am to 4pm, Saturday 9am to 2pm. Only 2 people at once.

Telephone **01978 823333**



BRYNIAU CLWYD A DYFFRYN DYFRDWWY CLWYDIAN RANGE AND DEE VALLEY

This is the start of International Dark Sky Week, a weeklong celebration of the night sky. Follow us and our partners **Prosiect NOS** on Facebook for activities, facts and guides to the beauty that is our night sky all from the comfort of your home and garden.

RUABON DISCOUNT STORE

New High Street Ruabon. Tel: 01978 810982

OPEN Monday, Thursday, Friday & Saturday 9am to 3pm We have the everyday essentials if you can't get to the big supermarkets, we have bread, milk, biscuits, teabags, sugar as well as your cleaning products, toiletries and key cutting service. We have Paypoint so you can top up your **gas** and **electric** and pay any bills. We are only letting in 2 customers at a time and will be asking customers to wait outside until someone leaves. We offer CONTACTLESS payments, thank you.

THE VAULTS RUABON

We have partnered with **Age Concern** in the village and the local **NISA Store** in order to bring food and toiletries to those in greatest need in these unsure times. We'd still love to take your donations of non perishable goods and toiletries to deliver to our community members who need it most. If you'd like to donate, we can take your donations here at the pub. Call us on **01978 824130** and we'll make sure we can organise a time when someone is here to receive them. Thank you.

L ROWLANDS & CO RUABON

The Medical Centre, Ruabon, LL14 6NH

Please note we are only allowing 1 person in at a time and if queuing outside please keep to the social distancing guidelines.

Open: Monday to Friday 10am to 12pm then 2pm to 6pm' Saturday 10am to 1pm

Tel: 01978 821802

Please collect repeat prescriptions after 2pm
Advice regarding prescriptions. Please ring the pharmacy to be certain your prescription ready. So you or the person going to collect it for you does not make a wasted journey, helping to keep every one safe

GOT A PRE-PAYMENT METER?

SELF ISOLATING?

Contact your supplier on the numbers below and they will send you out 2 weeks worth of Gas / Electricity or if you have a smart meter they will top you up.

BRITISH GAS 0333 202 9802

EDF 0333 200 5100

EON 0345 052 000

N POWER 0800 073 3000

SCOTTISH POWER 0800 027 0072

ARRIVA SERVICE UPDATE

We are running a further revised timetables across North Wales and Chester this is following the government advice to **#StayAtHome** and to only travel if your journey is essential for timetable information please check for **North Wales/Chester (inc Llangollen)**

<https://www.arrivabus.co.uk/coronavirus/important-service-information---wales/>

For Oswestry/Wrexham

<https://www.arrivabus.co.uk/coronavirus/important-service-information---midlands/>

COVID 19—SUPPORT FOR THE ISOLATED AND VULNERABLE IN LLANGOLLEN RURAL

In order to ensure that anyone isolated or vulnerable has access to support, our Community Agent will be contactable by email or telephone, to support those in need in our community. He will also provide help where it is needed, as we know that the older population is at risk due to being asked to self isolate.

The Community Agent will concentrate on providing practical support by directly helping people with for example:

- * *Collecting and delivering prescriptions*
- * *Essential food shopping*
- * *Providing support and guidance via telephone or email*

This will be done while abiding by social distancing rule.

If you require support or know of someone in need from Fron, Garth or Trevor please contact:

David Jarvis - Community Agent Llangollen Rural Community Council Telephone 07956 292546

Email: trevorcommunityagent@gmail.com

The Community Council has set up a Facebook group:

Llangollen Rural Community Council Coronavirus Support Group

<https://www.facebook.com/groups/224333768974917/>

In **FRONCYSYLLTE** we have our own 'unofficial' support group, **Froncysyllte Community Support** which is proving to be very effective. Our Newsletter for this group aims to provide a link between people in Fron who need support and those in the fortunate position of being able to offer their support. Areas of possible help include: Collecting prescriptions. Collecting shopping. Walking dogs. Simply being a person to talk to. We have volunteers in Fron ready and able to help. Please contact us and we will try to help whenever possible. For regular updates please ask John or check our facebook group

Froncysyllte Community Noticeboard. Our Contacts are:

Keith Sinclair 01691 773634 email: keithsinclairlrrc@gmail.com

Sian Williams (Fron Community Centre) **Claire Parry** (Volunteer) **07432 494002**

Fron Post Office has also agreed to pass on details

WATKINS & WILLIAMS LLANGOLLEN

Llangollen's traditional DIY store, providing everyday essentials, key cutting service and speciality products for the home and garden. Also supply coal, logs and aggregate. Order and pay direct, home delivery available. Please call: **01978 860652** to check opening times and availability, thank you.

Email: watkinandwilliamsLtd@yahoo.co.uk

DEE VALLEY PRODUCE

All Produce is daily market fresh, prices subject to change daily, fruit, veg, plants, dairy, eggs, jams and chutneys. Shop opening **Monday to Saturday from 9am to 4pm** closed Sundays. We are very busy with orders so deliveries will take a few days, if you can visit the shop we would be delighted to see you but we ask no more than 3 customers in the shop at any one time please so we all stay safe. Call: **01978 861805** Payment will be taken securely over the phone. or email us at deevalleyproduce@gmail.com



BETSI CADWALADR

Our NHS needs you - sign up to become a BCUHB Public Volunteer today. The NHS in Wales is in the midst of battling the COVID-19 pandemic and are seeking

volunteers to support us during this exceptionally challenging time. There's a variety of tasks you could do, from providing telephone support to individuals who are at risk of loneliness, to general admin or cleaning duties in patient areas, e.g. supporting medical records, cleaning duties or supporting catering staff. To find out more or to sign up, visit: <https://bcuhb.nhs.wales/contact-us/get-involved/>

EDWARDS DAIRY CHIRK 01691 778266

Delivering milk and other produce to your door
Email sales@edwardsdairies.co.uk Please let us know by email if you need to amend your order, thanks. Check our Facebook page for new items you can add to your order.

Due to high volumes of calls, please **only** call our landline **01691 778266** if you no internet access and press option **1** when you are connected . We give a big shoutout to our amazing drivers, we cannot thank them enough for their hard work and dedication.

SHOP IN THE CLOUDS

Hope everyone is keeping well and staying safe. We have been busy working behind the scenes and will slowly be putting all our stock on **facebook instagram & twitter** just order through messages anytime. Anything you want to know just ask us. Message or email orders@shopinthecLOUDS.co.uk we have our website that we are constantly adding to www.shopinthecLOUDS.co.uk

We can gift wrap and send to any address for you. We want you all to stay safe and stay home and look forwards to welcoming you back to both our shops when it is safe to do so, thank you.

CLWYD FAMILY HISTORY SOCIETY

It was with great sadness and regret that we decided to cancel our April 2020 AGM; Updates will be posted as and when decisions are reached by the committee.

All society meetings for APRIL, MAY & JUNE have also been cancelled

Please check our Facebook page for updates and information



FAMILY ART CLUB While T Pawb is closed, we will continue to deliver an adapted version of Family Art Club each Saturday morning as part of our 'Arts at

Home' programme. Our Family Art Club artists will create downloadable activities, which will be made available via our website and [facebook page](#) each Saturday.



COVIBOOK This short book workbook has been produced to support and reassure children, under the age of 7, regarding the COVID-19. This book is an invitation for families to discuss the full range of emotions

arising from the current situation. It is important to point out that this resource does not seek to be a source of scientific information, but rather a tool based on fantasy. Print this material so children can draw on it. Remember that emotions are processed through repetitive play and stories read multiple times. *This is available in over several languages*

<https://www.mindheart.co/descargables>



WHO ARE YOU CALLING OLD?...

Why not get comfy this weekend and go on a virtual tour of some famous galleries and museums from around the world, all from the comfort of your own place.....

<https://www.travelandleisure.com/attractions/museums-galleries/museums-with-virtual-tours>

THE WILDLIFE TRUSTS have launched the first



#WildlifeWednesday video on the Wildlife Watch YouTube channel! A new video for kids and families will be published every Wednesday at 10am

<https://www.youtube.com/user/WildlifeWatchUK>



GARDEN BIRD DETECTIVE

How many of these garden birds can you find? Download your spotter guide

<https://>

www.northwaleswildlifetrust.org.uk/sites/default/files/2020-04/garden%20bird%20detective.jpg



LEAF BASHING, also known as

Hapa Zome, is the process of creating natural prints by beating fresh leaf matter into cloth. Leaf bashing is an activity you can do in

any outdoor space, however big or small. You can even do it inside with natural materials you have collected while outside - but we'd encourage you to do it outdoors if you can.

Leaf bashing video Since the school closures, Muddy Faces director Liz's two children, 10-year-old MJ and 12-year-old TJ, decided they wanted to turn activities from our Outdoor Hub into videos to help children get outdoors and connecting with nature. This video shows you how to go about doing some leaf bashing at home. Keep your eyes out for more Muddy Faces how-to videos coming soon!

https://www.youtube.com/watch?v=u8GI4_Jeer8&feature=youtu.be&mc_cid=1483048801&mc_eid=c2aa1993b2

LETTER FROM WBC EDUCATION DEPARTMENT ABOUT THE REVISED SUPPORT FOR THOSE ELEGIBLE FOR FREE SCHOOL MEALS

Dear Parent/Carer

Firstly, can I thank you for your efforts in providing learning opportunities and supporting your children at home during these difficult and unprecedented times.

Since schools were closed for educational purposes on 20th March, the Council has been providing "Grab and Go" packed lunches for children eligible for free school meals through twelve distribution centres across the County Borough. This system was introduced as an interim measure to give time to develop a system which will reach more families whose children receive free school meals when attending school and will continue upto and including Friday 1st May.

As from Monday 4th May, the Council will be introducing a Direct Payment system where parents will receive a payment into their bank account on a monthly basis equating £19.50 per week for each eligible child in the family.

This will enable parents to purchase food for their children and reduce the necessity to make daily visits to the distribution points and also reduce travel across the Borough. For the children of critical workers and vulnerable children in receipt of free school meals who are attending school and are currently in receipt of free school meals, this scheme will also apply and parents will be required to pay for the meal in school should they wish their child to have one or alternatively provide a packed lunch though using the finance provided.

Parents with children who receive free school meals are strongly encouraged to register through completing the registration form accessed through Council's website at:

https://myaccount.wrexham.gov.uk/en/service/Free_School_Meals____Direct_Payment_Application

https://fynghyfrif.wreccsam.gov.uk/cy/service/Free_School_Meals____Direct_Payment_Application

Applications will open from 9am on Monday 20th April, and will close on Friday 1st May 2020 at 5pm.

Payments for those who qualify will be made on Wednesday 6th May.

Applications made after the closing date above, will not be paid in May.

Should there be any queries, please contact freeschoolmeals@wrexham.gov.uk

Yours sincerely,

Ian Roberts

Chief Officer;

Education and Early Entitlement



YSGOL RHIEWABON UPDATE

Maverick: Our New School Mascot

Mrs Harrigan brought Maverick to Ysgol Rhiwabon recently to see everyone. Maverick has now agreed to be the school mascot, and will try to keep everyone updated. We noted that

Mrs Ferron-Evans seems to have taken quite a shine to him too!

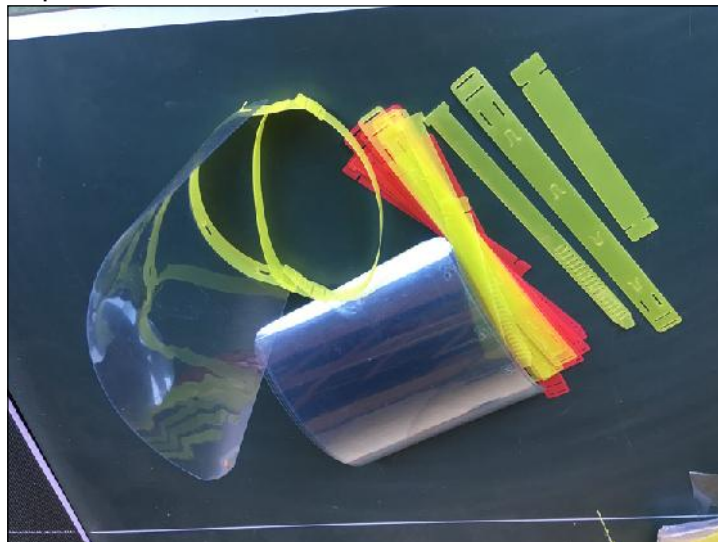
Visors for NHS Workers

The Ysgol Rhiwabon D&T department have been working with D&T staff at Ysgol Dyffryn Ogwen, to produce and distribute Personal Protective Equipment for NHS front line staff.

Two different designs have been produced and both have been gratefully received by hardworking nurses and doctors.

If you are part of the local NHS staff and are struggling to get hold of Personal Protective Equipment and would like some visors please email

Mr D. Roberts on – RobertsD518@hwb.cymru.net



INFO
I bobî ffanc yng Nghymru
For young people in Wales

IT'S NORMAL TO FEEL SAD, STRESSED, CONFUSED, SCARED OR ANGRY DURING A CRISIS.

TALK TO PEOPLE YOU TRUST, SUCH AS FRIENDS AND FAMILY OR VISIT WEBSITES FOR SUPPORT

Visit www.youngwrexham.co.uk



Live chat with us Gyrfa Cymru
Careers Wales

Careers Wales has launched its Wales-wide live chat with careers advisers, so young people and their parents can still get vital careers advice around their options and next steps, whilst schools and colleges are closed.

We can help:

- School pupils who are unsure on their next steps following recent decisions around school closures and exams
- Further education students who want to understand their options and what happens next
- Parents who are worried or concerned about their child's future options and career
- Young people who are normally educated at home.

Sample of the Visors above and photo of Staff at Ruabon Medical Centre wearing some of the visors

Ysgol Rhiwabon's contingency plans during closure

We recognise the importance of keeping communication channels open. Any important updates during the closure will be communicated on our website and through our Parent Text Messaging Service.

School Counselling Service Janet Butler of **Outside In Counselling** can be contacted on **07800 999 001**. They signpost to **Young Wrexham** website which is full of fantastic information on a wide range of subjects

www.youngwrexham.co.uk

Follow the school Twitter: [@ysgolrhiwabon](https://twitter.com/ysgolrhiwabon)
e mailbox@rhiwabon-high.wrexham.sch.uk
Website: www.ysgolrhiwabon.co.uk



Find out if your business is eligible for support from the new Economic Resilience Fund:

<https://fundchecker.businesswales.gov.wales/>

The fund will provide additional financial support during the coronavirus pandemic and will help organisations to manage cash flow pressures. It will help to address some of the gaps not met by schemes already announced by the UK Government, Welsh Government and Development Bank of Wales. Minister for Economy, Transport and North Wales, Ken Skates said:

“This is another important step designed to help those businesses and charity organisations who are struggling with cash flow problems. The fund will go live for applications next Friday (17th April), but I must reiterate the importance of those considering applying to go through the guidance to establish whether they are likely to be eligible. This fund will reach a significant number of businesses, charities and social enterprises, but it’s clear it won’t reach all.” To be eligible for this second phase of support, businesses, charities and social enterprises, must meet criteria including:

- Micro businesses, including start-ups, employing up to nine employees could be eligible for up to £10k support. This includes sole traders employing staff. Businesses in this bracket could qualify for support from the fund if they:
 - Have experienced more than a 40% reduction in turnover since 1 March 2020
 - Can demonstrate that efforts have been made to sustain business activity
 - Are not pursuing other forms of Welsh Government non-repayable grant funding support
 - Are not entitled to business rate relief grants
 - Are VAT registered or exempt from VAT
 - Operating address is in Wales and have employees in Wales
- Small and medium sized firms with between 10 and 249 employees could be eligible for grants of up to £100,000 if they:
 - Have experienced more than a 60% reduction in turnover since 1 March 2020
 - Are not be eligible for business rate relief grants, or if they are, that amount would be deducted from their allocation from this fund
 - Have a sustainable business plan to trade beyond the Covid-19 pandemic
 - Confirm no future compulsory redundancies will be made as long as the Coronavirus Job Retention Scheme is in place
 - Are not be pursuing any other form of Welsh Government non-repayable grant funding support
- Funding will also be available to support large businesses with more than 249 employees. Applications will be considered on a case-by-case basis to consider where funding can be deployed most effectively to compliment other sources of support. The application process for businesses qualifying for financial support from the Economic Resilience Fund will open on Friday 17 April via the Business Wales website.

Full details on the eligibility criteria can be found at:

<https://fundchecker.businesswales.gov.wales/>

The application process for businesses qualifying for financial support from the Economic Resilience Fund opened on Friday 17 April via the Business Wales website.

The Economic Resilience Fund now open for applications

Follow this link to check your eligibility and if you are eligible you will be given a link at the end of the check to the application form.

<https://fundchecker.businesswales.gov.wales/>

It is a straightforward application – you will need your VAT registration number, company registration number if applicable, plus bank details and your turnover.

Further details regarding eligibility and guidance notes can be found here:

<https://businesswales.gov.wales/sites/business-wales/files/Economic%20Resilience%20Fund%20%28microbusiness%29%20-Guidance%20notes%20-%20%2008.04.20%20-%20English.pdf>

If your application is approved you will receive a letter within 2 weeks which needs to be signed and returned - payment will then be in your bank within 28 days following receipt of the letter.

Please note you cannot receive both the Business Rates Relief Grant and the Economic Resilience Fund grant.

THE JOB RETENTION SCHEME PORTAL IS NOW LIVE!

Businesses are now able to submit a claim (some of you will have asked your accountant to do this on your behalf). Before you start the claim process you will need to:

check that both you and your furloughed employee can use the scheme

<https://www.gov.uk/guidance/claim-for-wage-costs-through-the-coronavirus-job-retention-scheme>

work out how much you can claim

<https://www.gov.uk/guidance/work-out-80-of-your-employees-wages-to-claim-through-the-coronavirus-job-retention-scheme>

If you are eligible to make a claim, this link gives you full details of all the information you will need to provide, together with information about what happens after you have submitted a claim.

<https://www.gov.uk/guidance/claim-for-wages-through-the-coronavirus-job-retention-scheme>

OTHER NEWS:

HMRC clarifies income and trading profit calculation

HMRC has published guidance outlining how total income and trading profits will be calculated under the Self-employment Income Support Scheme (SEISS). HMRC will use the figures provided on tax returns for total trading income (turnover), then deduct any allowable business expenses and capital expenditure. Examples of allowable expenses include office and premises costs, travel costs, staff costs and the cost of raw materials. <https://www.gov.uk/guidance/how-hmrc-works-out-total-income-and-trading-profits-for-the-self-employment-income-support-scheme>

New lenders announced under the Coronavirus Loan Scheme

The British Business Bank has announced that it has approved four new lenders for accreditation under the Coronavirus Business Interruption Loan Scheme (CBILS). The lenders are The Co-operative Bank, Cynergy Bank, OakNorth Bank and Starling Bank. Full details: <https://www.british-business-bank.co.uk/british-business-bank-announces-new-lenders-under-the-coronavirus-business-interruption-loan-scheme/>

Business Rates Grant Update

Wrexham Council would like to thank everyone involved in paying out more than £14 million to 1,220 businesses in Wrexham as part of the business rates relief support announced by Welsh Government. Claims are still being received every day and anyone who hasn't applied yet is encouraged to check if their business is eligible and if so, submit an online application. If you do apply, please check the details you provide very carefully – especially bank account numbers and sort codes – as incorrect details can lead to delays in payment.

Online application form: <https://beta.wrexham.gov.uk/service/covid-19-help-businesses>

Businessline

Wrexham Library, Rhosddu Road
Wrexham LL11 1AU

Telephone: 01978 292092

Email: businessline@wrexham.gov.uk

Website: www.wrexham.gov.uk/businessline





YSGOL CEFN MAWR UPDATE



Hello from everyone at Ysgol Cefn Mawr, we hope you are all well and staying safe. We are busy at the moment working with key workers' children. They have done a brilliant job at creating rainbows to thank our key workers using a variety of materials.

Just a reminder for those eligible, the grab and go lunches are available from Plas Madoc Estate Office between 11.30am and 1pm.

A reminder to all parents that weekly home learning tasks are uploaded to the school **website/app** and **ClassDojo** each **Friday**.

Please contact the school if you need help with access to any of these.

Tel: **01978 820719**, or email: mailbox@cefnmawr-pri.wrexham.sch.uk.

We miss all of the children and look forward to the day when our school family can be together again. Stay home, stay safe and protect the NHS.



BBC Bitesize Daily

Primary

Monday	Tuesday	Wednesday	Thursday	Friday
Maths	English	Science	Maths	English
History	Geography	Wellbeing	Music	Computing

Secondary

Monday	Tuesday	Wednesday	Thursday	Friday
Maths	English	Chemistry	Maths	English
English	Biology	Maths	English	Physics
History	Geography	Spanish	Religious Studies	Music