



The Holly Bush Inn, Established 1800, the oldest pub in Cefn Mawr and home of the Plas Kynaston Canal Group, Cefn Square, Cefn Mawr, Pontcysyllte World Heritage Site, Wrexham, LL14 3AE, Tel **01978 253 477**



The Kick Off Meeting 12th January 2017, present members were our local people in the PKC Group, Local Community Council, Local Traders and AVOW.

The KICK OFF MEETING was about WCBC and other third parties working on a third master plan that continues to segregate our community from the WHS. If this master planning is allowed to go ahead this will ruin our chances of turning our economy around at the centre of the World Heritage Site and stop us putting our community on the road the Sustainable Tourism and Economic Development.

For an outline of how our community at the centre of the Pontcysyllte World Heritage Site can be included and our economy regenerated please see the below documents that are all based on Welsh Planning Policy and the Future Generations Act.

Sustainable Tourism & Economic Development for the Cefn & Cefn Mawr

[The Cefn, Cefn Mawr & FGA 2015](#)

[The Cefn, Cefn Mawr & WSP 2016](#)

[The Cefn, Cefn Mawr & WPP 2016](#)

[The Cefn, Cefn Mawr & WTS 2016](#)



A show of hands in the Holly Bush Inn for getting Cefn Mawr back on its feet, 14th January 2017, please note we all want the same thing, we want our village back and we want WCBC and other third parties to work with us. We do not want to be segregated from the WHS corridor any longer. If there is any doubt about our community being segregated please see “[Where is Cefn Mawr](#)” which clearly shows how our community has been left out and ignored. This must stop and WCBC needs to start working in accordance with WPP.



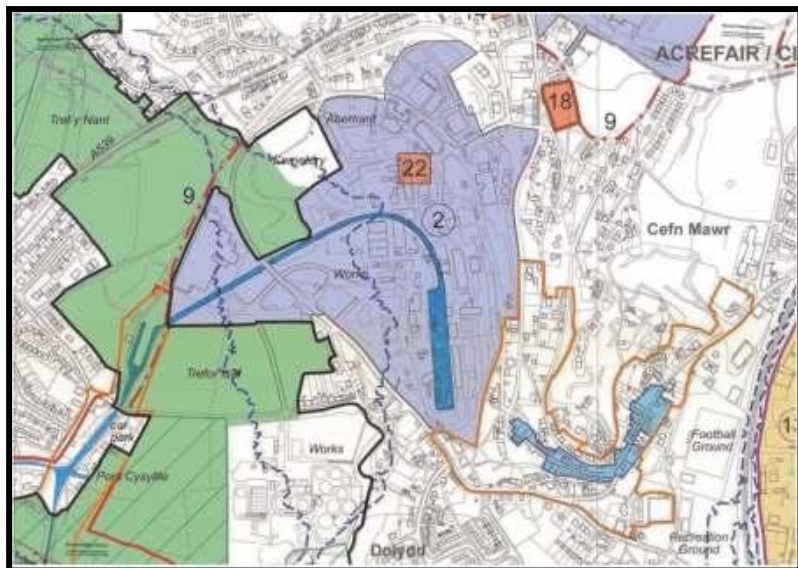
Public Consultation for the planned **Local Development Plan 2**, (LDP2) by Wrexham County Borough Council (WCBC) was held at the Holy Bush Inn in March 2016.



The PKC Group had held a number of meetings in 2014 and 2015 leading to the proposals submitted to the WCBC for inclusion into the **LDP2** during its term until 2028.



This website is for **Cefn**, covering **Cefn Mawr** and **Surrounding Villages** that are central to the **Pontcysyllte Aqueduct World Heritage Site** along the **Llangollen Canal**. The villages of Cefn and Cefn Mawr are immediately adjacent to both the **Pontcysyllte Aqueduct** and **Cefn Viaduct** that span the **River Dee Valley**.



Please send us your input, so we can build a better site and future for us, our children and grandchildren. Have a look and find out about the History, Present, and Plans for the future. Everybody is welcome to the information here on what has happened, is going on or is going to happen and to help out if you want to!

Email us

pkcgroup@hotmail.co.uk

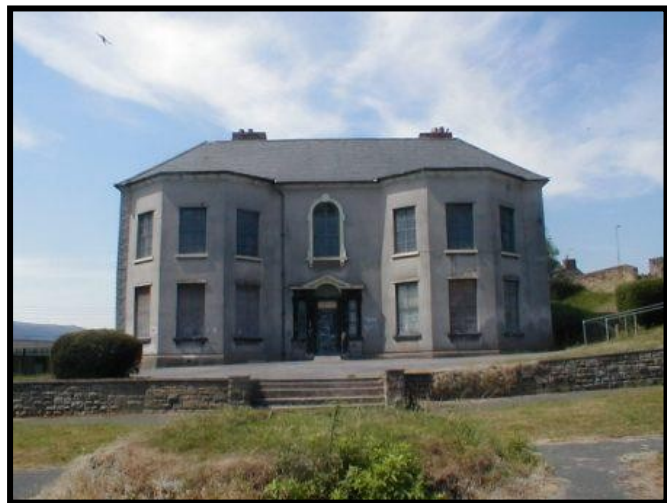


The Plas Kynaston Canal once served the industries of Cefn Mawr that provided employment for local people, but eventually became buried beneath the mighty Monsanto Works in the 1900's. However those works have now

closed and the site is vacant providing the opportunity to reinstate the Plas Kynaston Canal back to Cefn Mawr. This would reconnect Cefn Mawr & Surrounding Villages to the Inland Waterway Network. The Llangollen Canal is the UK's busiest canal and the Pontcysyllte Aqueduct draws over 250,000 tourists annually.

The canal could again bring employment opportunities & prosperity to the area by encouraging tourism into our villages and community, exploring the local industrial heritage of our area.

Plas Kynaston Hall is a Grade II listed building located within the Cefn Mawr conservation area is being renovated by the **Welsh Georgian Trust**.



Since the Plas Kynaston Canal, PKC Group was formed in 2010 to promote tourism in the central section of the World Heritage Site on the Llangollen Canal adjacent to the Pontcysyllte Aqueduct the PKC Group has received wide and popular support from the general public both locally, nationally and internationally. The PKC Group are putting the villages that lie between the Pontcysyllte Aqueduct and the Cefn Viaduct along the River Dee and Llangollen Canal on the tourist map.

The PKC Group at the Glydwr University in Wrexham to highlight the potential for reinstating the Plas Kynaston Canal back into Cefn Mawr. The group likes to join in with local events around our community to encourage positive outcomes for Cefn. Although PKC Group is based in Cefn Mawr, it also looks at the wider community such as surrounding Villages of the Cefn, the Pontcysyllte WHS and County of Wrexham. Please check out this website for proof.



Mark Isherwood AM, Shadow Minister for Communities and Housing visiting Cefn Mawr and the PKC Group. Mark has met a number of high street traders during his visits to Cefn Mawr in support of the group's activities.

Public backing for £15m marina plan

By Claire Gallagher
claire.gallagher@nwn.co.uk

MORE than 2,000 people have backed ambitious plans to build a £15m marina in Cefn.

A petition has attracted widespread local support as campaigners plan to push ahead with the idea, which they say could create a whole new tourism industry in the area.

The group behind the marina, the Plas Kynaston Canal and Marina Group, handed their plans to council leader Aled Roberts at Wrexham's Guildhall on Friday.

They want the council to include the proposals, which also include a working forge or museum, in the authority's forthcoming local development plan (LDP).

Among those behind the plan, which includes extending Llangollen canal and building a marina for 60 boats, is the sub-postmaster of Cefn Post Office, David Taylor.

He said: "We want to re-establish Cefn as a proper community.

"This is probably the most important thing that the area has seen.

"It could give the Wrexham area a destination to be proud of, a whole tourism industry."

The group have already been in talks with the council and British Waterways about the plans, and will be having discussions in future about how to finance the project.

Cllr Roberts said the petition and plans would be officially raised at a council meeting on either



■ Marina vision: David Taylor, David Metcalfe and Stephen Wadsworth.



We want to make Cefn as a proper community again

September 22 or 26. During the meeting the group will have the opportunity to present their ideas formally.

Cllr Roberts added that council's the public protection team were liaising with owners at the former Flexsys site, which is included in the plans.



■ Council leader Aled Roberts takes delivery of the plans at the Guildhall. (SR160710L)

contamination issues on the land.

Another member of the group, Stephen Wadsworth said it was 'exciting' to see the plans handed in to the council.

He added: "It's taken a lot of work

The PKC Group continues to be active in the role of seeking the reinstatement of the Plas Kynaston Canal to link Cefn Mawr and the Cefn into the inland waterway network at the centre of the Pontcysyllte World Heritage Site. This news article from 2010 shows a petition of 2000 signatories being handed into the Wrexham County Borough Council. The petition was raised locally in the Cefn and remains valid. As does all the other work we have done (all of us) since then and we (PKC Group) keep in regular contact with Eastman's, now the current site owner of the former Monsanto Chemical Works site.

See the story in the press so far: [News Paper Cuttings](#)

Llyr Gruffydd, Plaid Cymru Assembly Member for the North Wales Region discussing matters with David Taylor and Steven Hughes about bringing tourism to Cefn Mawr and the PKC Group proposals to bridge the gap between the Pontcysyllte Aqueduct WHS and Cefn Mawr for the betterment of all. Llyr Gruffydd, visited the site in February 2012 for a meeting with the Heritage Minister of the Welsh Assembly Government.



Please note that these forms were in response to the second round of the WCBC Local Development Plan (LDP) Consultation in 2011. They were additional to the 2000 strong petition handed to the WCBC in 2010 by the PKC Group, which had been presented on behalf of our community at the centre of the Pontcysyllte World Heritage Site. The PKC received more support in the LDP than any other nomination for incorporation into the WCBC Local Development Plan.

The PKC Group thanks every one for their support and backing on this. Please remember this is a long term project with significant technical difficulties to overcome in order to achieve the full restoration of the PKC.

We actively support the local Community News and write the back page articles on a regular basis. This is usually about a relevant topic such as has been the case with the LDP2 by WCBC and the implications for the Cefn & Cefn Mawr, or an interest piece about our local history.

Back issues of the **Community News** can be downloaded from our website.





■ Plas Kynaston Canal group members (from left) Kris Morrison, Top of Cefn Residents Association chairman Peter O'Byrne, Catrin Williams, Yvonne Pryce and Cefn Marina chairman and project manager David Metcalf prepare to hand their representations into Wrexham Council.

Public throw their backing behind £15m marina plan

By Claire Gallagher
claire.gallagher@nwn.co.uk

THE MAN behind the marina proposals in Cefn Mawr says he has been "overwhelmed" by the public response to the scheme.

About 1,350 individual letters in support of the £15m project were handed into Wrexham Council on Friday.

Back in June, the Plas Kynaston Canal and Marina Group officially submitted the plans and have asked for them to be included in the authority's forthcoming local development plan (LDP).

Since then the group has been busy collecting letters of support for the plan which is to extend the Llangollen canal and to build a marina for 60 boats on the site of

//
Everyone can see how it will benefit the area

the former Flexsys factory.

The group gave the individual letters to the council on the final day of the consultation period into the LDP for Wrexham.

Dave Metcalfe, the group leader of the Plas Kynaston Canal and Marina Group, has been putting in 16 hour days working on the plans.

He says the support has been "overwhelming" and feels the 1,350 letters will help make their case for the plans to be part of LDP.

It is expected that the planning inspectorate for Wales will then consider whether the marina plan

can form part of the LDP.

Mr Metcalfe said: "The people of Cefn Mawr, surrounding villages and our supporters from all over the country have spoken, I only hope the right people are listening.

"I can't say thank you enough to everybody who has filled the forms in.

"We have been canvassing every single high street shop and pubs and everybody is quite enthusiastic about it.

"Everybody can see how much it will benefit the area.

"I feel very, very confident and the plans are progressing.

"We have got the public support, it's getting the council on board."

Dave added that the Plas Kynaston Canal and Marina Group are currently looking for more members.

For more information on the scheme go to www.plaskynastoncanalgroup.org

But rest assured, despite the setbacks we have endured, we continue to work towards this goal as you can see from this website, our facebook page, the Cefn Community News Letter and work within the village.

Campaign group saves pub 'for the village'

WIRIAM header. 27/3/13.

A 200-YEAR-OLD village pub has been saved from closure by a campaign group.

The Hollybush is the oldest, and now one of the last surviving, pubs in Cefn Mawr.

Two weeks ago it looked set to go the same way as other pubs in the village as the windows and doors were boarded up.

But this week it will reopen after a village regeneration campaign group stepped in to save it.

The Plas Kynaston Canal (PKC) group was set up by local business leaders and residents, originally to push for the Plas Kynaston arm of the Llangollen canal to be reinstated, complete with a tourist-attracting marina. That is a long-term project which is still ongoing.

But when PKC chairman David Metcalfe saw the Hollybush up for sale last year, he "had a brainwave", said fellow PKC director Steve Hughes.

Mr Hughes, proprietor of Lure It fishing tackle on Crane Street, Cefn Mawr, said: "We do not want to lose another pub in the village."

"There's only that and the Queen's Hotel left."

"Dave had a brainwave, that we could buy the pub and use it as a base for the PKC".

In the past two years The Old Vaults on Well Street, the Railway Inn on King Street and the Plough in Rhosymedre have all closed.

The Hollybush itself has been under threat of closure since operators Pubfolio went into administration in 2010.

It has been kept running under a succession of landlords and administrators including Pricewaterhousecoopers, IBRC and KPMG.

Now, after months of negotiations, Mr Metcalfe has been granted the licence for the pub after finalising an £118,000 deal.

A grand re-opening is scheduled for Good Friday - although the windows may still be boarded up as the vacant property specialists had not been able to get a vehicle to the pub, due to the snow.

Mr Metcalfe said it had not been an easy process.

"We were hoping for a smooth transition but the pub was boarded up two weeks ago."

"We put in an offer which was accepted in October. We exchanged £10,000 and it was due to complete on February 7 but then it didn't get finalised."

"KPMG (administrators) gave clearance for the licence to be transferred on March 6, but it's been a battle to try to get it sorted out."

"It has cost us a fortune and the pool table and fruit machines have gone back, which is something we didn't need."

But it had been worth it, he said: "We're saving it for the village."

Hotel left.

■ The Hollybush pub in Cefn Mawr.

■ Plas Kynaston Canal group chairman David Metcalfe.

27/3/13.

Dave had a brainwave that we could buy it and use it as a base

Villagers who won their battle

VILLAGERS won their battle to reopen a pub in Minera last week. The village's Tyn y Capel pub closed two years ago, sparking a massive community campaign to reopen it that even caught the attention of TV chef Heston Blumenthal.

Campaigners set up Minera Community Ltd, which now has a lease on the building and keys to the property. The pub is set to reopen on April 20.



Want to see progress, come for a beer in the Holly Bush Inn or check out the [Holly Bush Inn Renovation Story](#), restored in partnership with the THI & WCBC.



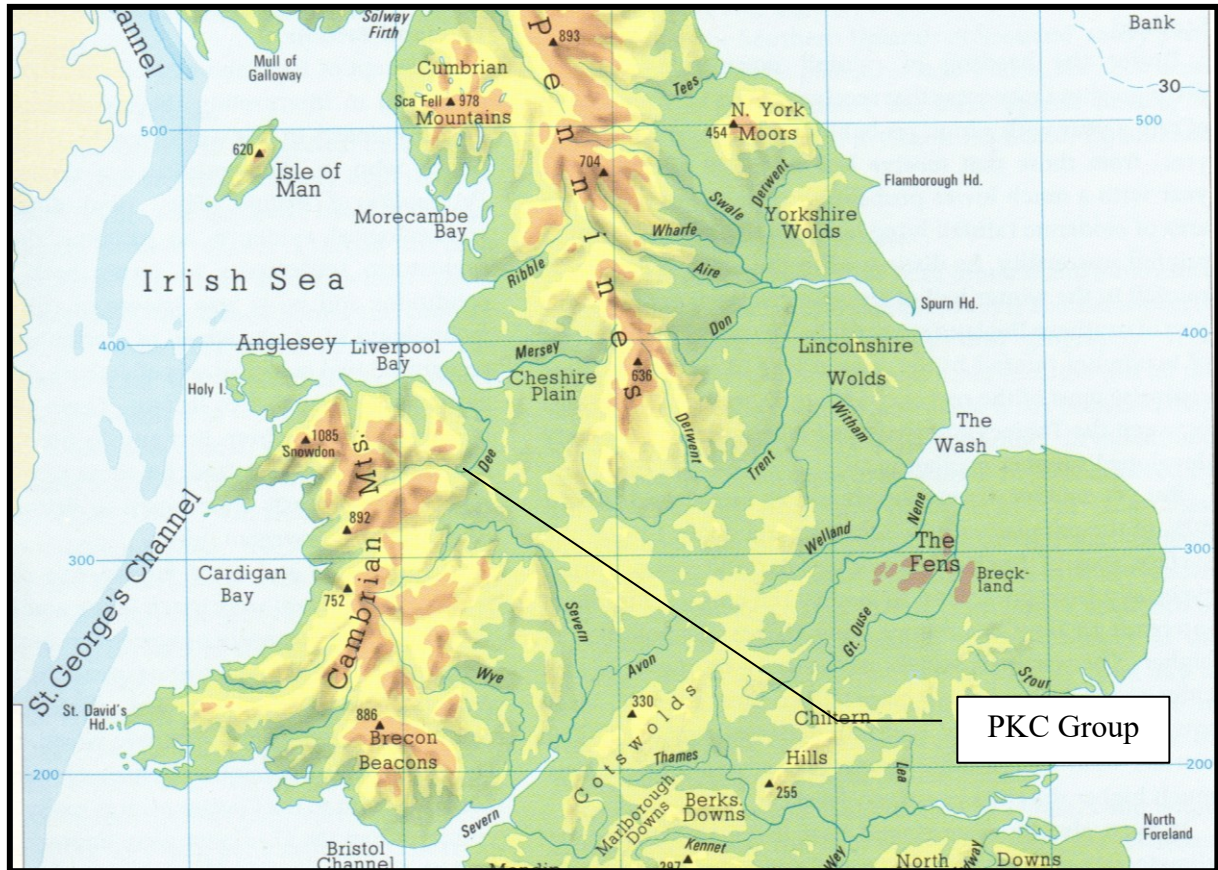
Another project is signage for local traders to tell people that Cefn Mawr village shops are still open for business. Here you can see the new sign for our village at the Tesco roundabout. The PKC Group works with Tesco, but since the arrival of their new store in 2012 local trade has seen a sharp down turn. The new road layout for Tesco acts as a bypass for the village centre and so something has to be done and we are doing it.



We are also proud to work alongside other voluntary groups such as the St Christians Special Needs School party clearing Crane Lane in the Cefn and all the other local groups we promote on this website. On our website we link these to the national relevant bodies for the preservation and promotion of our local heritage, such as CADW, IWA, National Library of Wales, CRT, National Archives and Visit Wales.



The end goal of the PKC Group is to reunite Cefn Mawr with the in land waterway network by reinstating the Plas Kynaston canal between the village and the aqueduct.



Come and meet the PKC Group at Holly Bush Inn,
Cefn Square, Cefn Mawr,
Pontcysyllte World Heritage Site
Wrexham
LL14 3AE

