



communities *first* cymunedau yn gyntaf



Proposed **Urban South** **CF Cluster**



Llywodraeth Cymru
Welsh Government



Meeting Format



- Presentation – Setting the scene
- Group Discussion Activity & Feedback
- Presentation – Moving Forward
- Questions / Answers

Meeting Aims



- Changes to the CF Programme
 - Proposed Cluster Model
 - Thematic Approach
- Impact on Community
 - Benefits / Challenges
 - Joined up thinking
- Moving Forward
 - Establish Steering group
 - Identify CF Work Programme
 - Create 'Delivery' Model

Key Terms



Welsh Government (WG) – formerly known as Welsh Assembly Government

Communities First Programme (CF)

Welsh Index of Multiple Deprivations (WIMD) – Statistical tables showing deprivation scores

Lower Super Output Areas (LSOA) – a community of approx. 1600 people.

Cluster – a group of LSOAs



communities *first* cymunedau yn gyntaf

Outcomes – the “change” we want to bring about

Example: Fewer children in Wrexham South living in poverty

Indicators – the way we measure this “change”

Example: No. adults in work / No. claiming income related benefit

Communities First



The story so far

- A Flagship Community Regeneration Programme from Welsh Government
- The most deprived 10% of communities were included
- Plas Madoc (SOUTH), Gwenfro (NORTH) and Caia Park (CENTRAL)
- The Programme commenced in Plas Madoc in 2003
- Funding for staffing and resources to support community-led regeneration projects. Project funding was available on a limited basis.



communities *first* cymunedau yn gyntaf

Changes in 2008

- Welsh Government revised both the WIMD and the CF Programme.
- A change from “wards” to Lower Super Output Areas (LSOA).
- Some wards, e.g. Cefn became 3 LSOAs Cefn1, Cefn2, Cefn3.
- Hermitage was split in this way leading to Hightown Communities First entering the CF Programme
- Plas Madoc is a LSOA and remains ranked in the top 5% of the WIMD, which now contains 1896 areas.



communities *first* cymunedau yn gyntaf

So what are the changes in 2012?

- From 2012 onwards the Communities First Programme must operate in a CLUSTER including several LSOAs.
- A Cluster should cover a population of approx. 15 000
- A Cluster should include areas that fall within the top 30% of WIMD 2011.
- Preference will be given to Clusters including more areas that are within 10% and 20%
- Clusters will be overseen by Regional Co-ordination Bodies – possibly taking in one or more Counties.

THIS IS A CHANCE TO PUT WREXHAM SOUTH ON THE MAP

Urban South CF Cluster

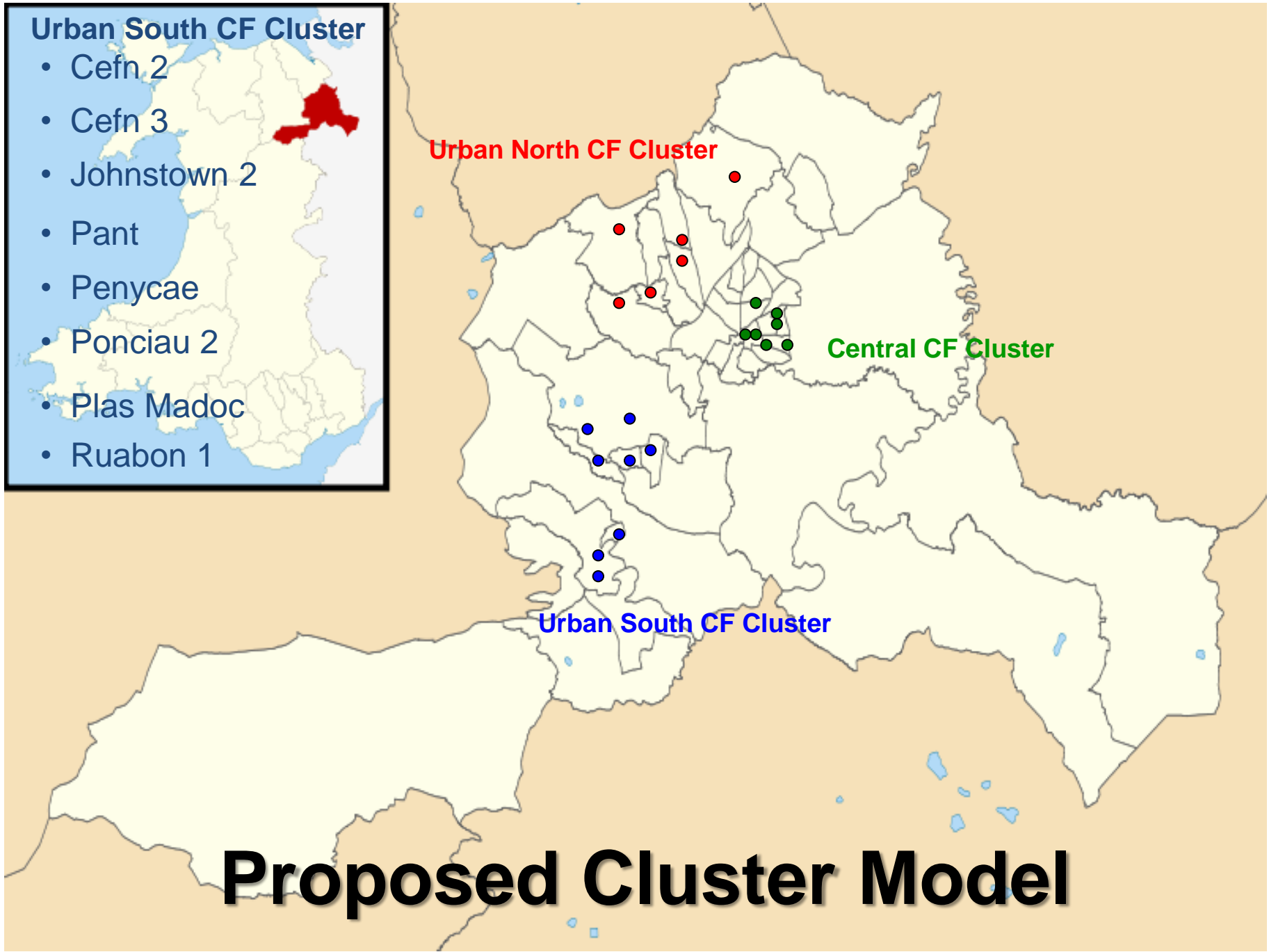
- Cefn 2
- Cefn 3
- Johnstown 2
- Pant
- Penycae
- Ponciau 2
- Plas Madoc
- Ruabon 1

Urban North CF Cluster

Central CF Cluster

Urban South CF Cluster

Proposed Cluster Model



CF Programme Changes

Themed priorities – Outcome Focused (WG suggested indicators)

Learning Communities	<p>Improving Education / skills</p> <ul style="list-style-type: none"> - Key stage 2/3/4/ results - % school leaver with no qualifications - School absence rates - %18-19 year olds becoming NEETS
Prosperous Communities	<p>Improving Economic wellbeing</p> <ul style="list-style-type: none"> - % unemployed related benefits - % Incapacity / Severe Disablement Allowance - % Adults and children in Tax Credit households below a minimum threshold
Healthy Communities	<p>Improving Health Outcomes for Individuals</p> <ul style="list-style-type: none"> - Limiting Long Term Illness - All cause death rate - Cancer incidence rate - Low birth weights

Community Involvement Plan



Active Communities

Cross Cutting Themes

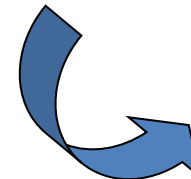


**Children, Young people / Child Poverty
Minority Groups – furthest from services**

South Wrexham Community Development Team



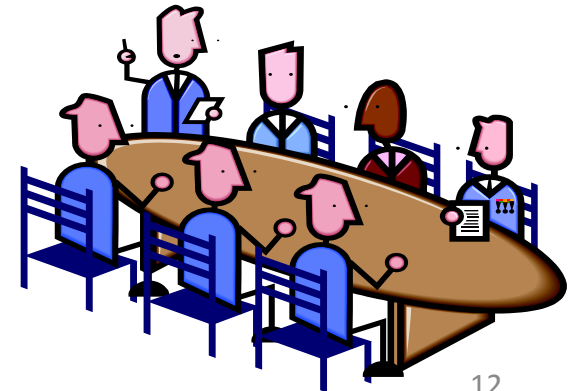
- Establish contact with community groups
- Identify key stakeholders
- Identify active community representatives
- Hold community consultations
- Identifying / Establishing Community Partnerships
- Complete ***Community Action Plan***



Cross Cutting Themes

Implicit in Action Plans:

- Local Communities Empowered
- Working in a socially inclusive way
- Building partnerships with support agencies



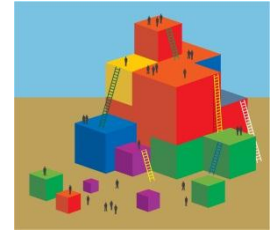
Community Action Plans (3 years)

Shared Goals and Visions:-

- Income, Employment and Education
- Environment
- Health and Well Being
- Community Safety
- Support to Young people and Families



Impact on Community



- Benefits / Opportunities
 - Collaborative approach
 - Shared thinking
 - Potential funding for community based activity
- Challenges / Threats
 - Community Identity
 - Individual Priorities
 - Financial Climate

Activity 1



- Small Groups
- List and discuss Pros / Cons
- Conclusion – 1 sentence
- Feedback

Moving Forward



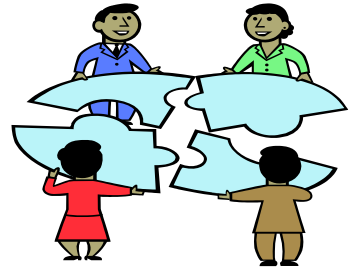
1. Steering group
 - Who should be involved?
 - How should each community be represented?
2. Identify CF Work Programme
 - What should the programme address in your community?
 - How should we use WIMD Indicators / localised Statistics / local knowledge (Action Plans?)
 - How should 'Partners' contribute to the programme?
 - How should 'Community' contribute to the programme?
 - What structure should be adopted?
 - Who should lead the programme?
3. Create 'Delivery' model
 - What staff are needed?
 - Where should they be based?
 - How should we approach the Work Programme Challenges / Opportunities?

Timescales - 2012



1	February	Form Steering Group
2	Jan - March	Identify Priorities / Projects
3	April	Submit application to WG
4	July -Sept	Prepare for delivery
5	1 st October	New programme starts

Your Input



How would you like to be involved?

- Steering Group member?
- Workshop Participant?

Questions

